

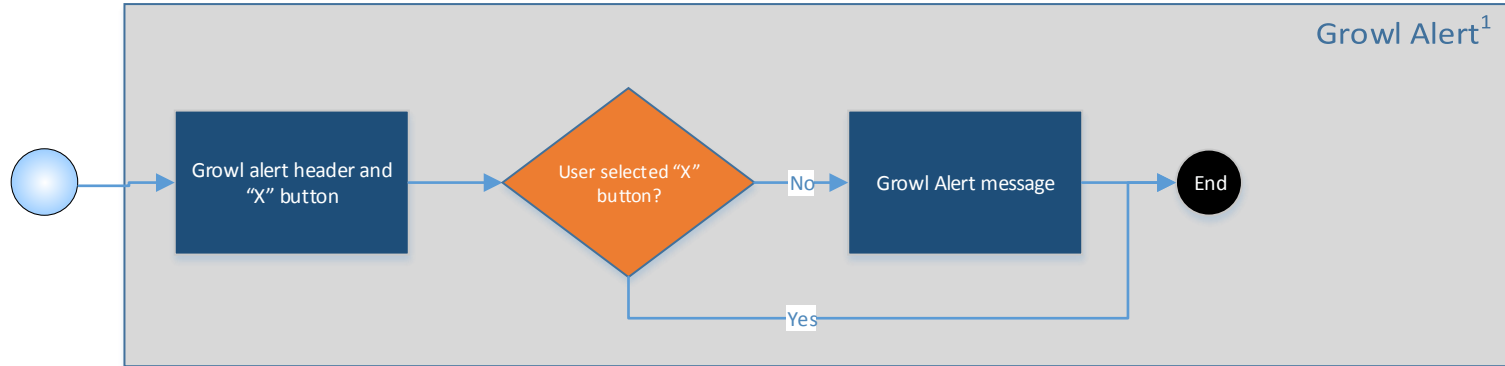
**User Workflow Overview:**  
With the appropriate user privileges, the user may need to “remove” incorrect vitals from the patient’s record. In order to perform this action, the user must select a vital and then select the “Entered in Error” button. Upon selection, the Entered in Error modal appears and the user must indicate which vitals for that specific date and time need to be removed and must indicate a reason for the action.

<sup>1</sup> If the user selects the “Check All” button, all Vital checkboxes on the form are checked, and the label changes to “Uncheck All”. Selecting the “Uncheck All” button deselects all of the Vital checkboxes.  
<sup>2</sup> Only the vital entries for the selected date are displayed.  
<sup>3</sup> The “Reason” section is inactive until the user selects a checkbox for at least one of the vitals on the form.  
<sup>4</sup> The “Enter in Error” button is inactive until the user selects an option within the Reason section.

## F170 – Vitals – Enter in Error – Growl Alert

Version 1.1

Screen Reader with User  
Interaction



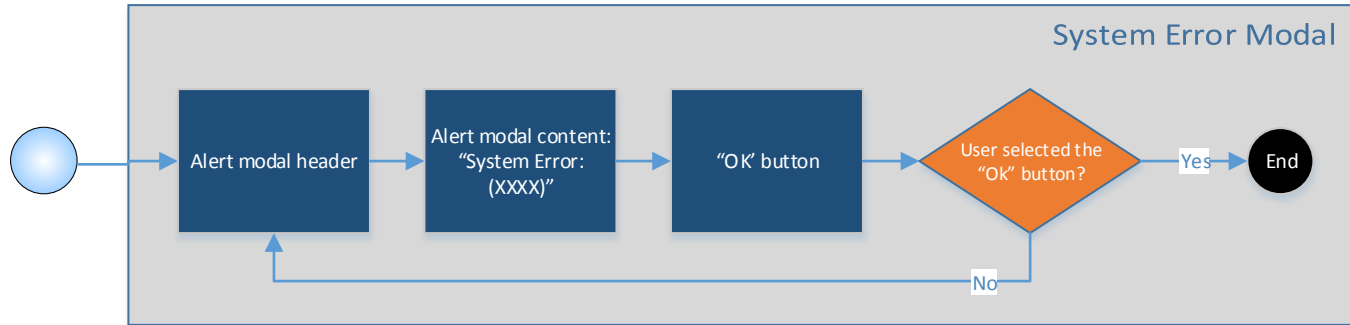
<sup>1</sup> The growl alert will automatically disappear after a few seconds.

**DISCLAIMER:** This workflow is used for reference only and is NOT a part of the official list of deliverables to the VA.

## F170 – Vitals – Enter in Error – System Error

Version 1.1

Screen Reader with User  
Interaction



**DISCLAIMER:** This workflow is used for reference only and is NOT a part of the official list of deliverables to the VA.