

User Overview

The eSignature modal allows a user to sign one or multiple items, including Inpatient and Outpatient Medications, Consults, Labs, Notes, Procedures, Rads, and Vitals. Once the user confirms the item(s) being signed in the eSignature modal, the user enters in his/her signature code into the appropriate text field, and selects sign to complete the process.

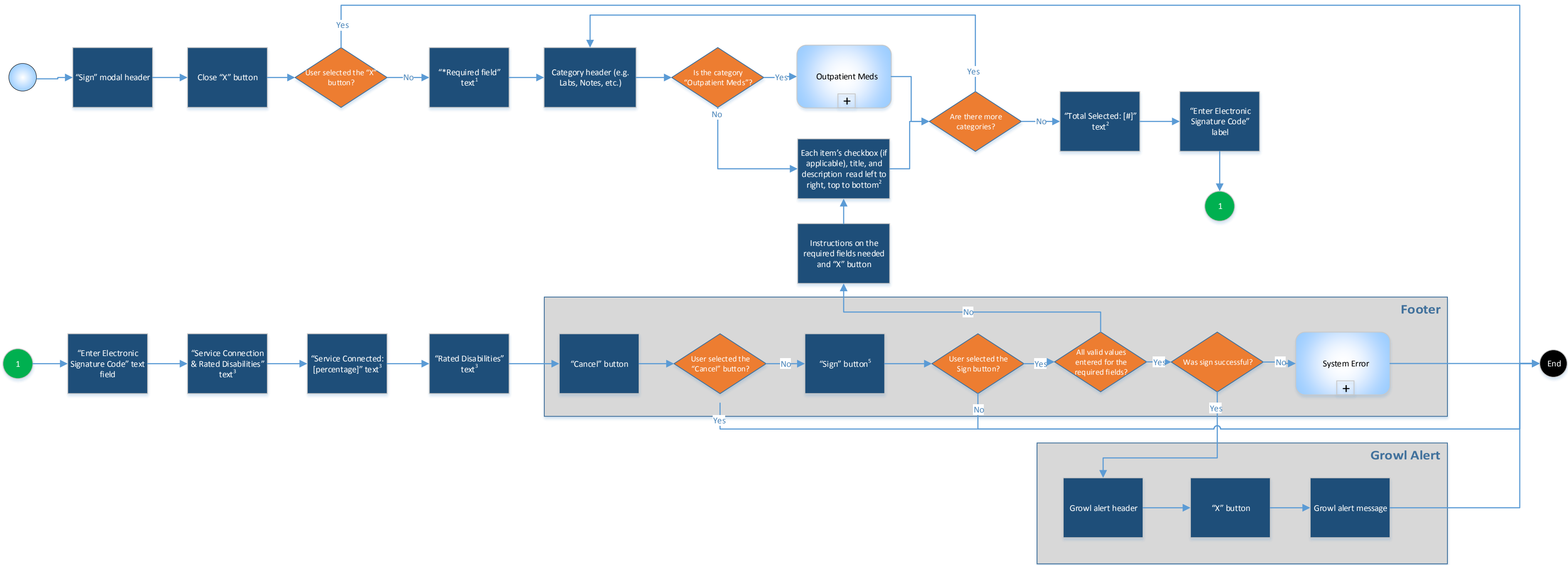
<sup>1</sup> The required text instructions are read by the Screen Reader at the beginning of the modal. (All other users will see it on the bottom of the modal.) However, when the Screen Reader gets to the bottom of the modal, it does not read the instructions.

<sup>2</sup> Checkboxes and the "Total Selected" text only appear when the user elects to sign multiple items at one time.

<sup>3</sup> This item only appears when the user is signing Outpatient Medication orders.

<sup>4</sup> When the user selects the "SC", "CV", "AO", etc. buttons, the radio buttons for the respective column is toggled between all Yes's or all No's. However, users who are using the Screen Reader will not have this option.

<sup>5</sup> The Sign button is disabled until the user inserts a signature code into the appropriate text field. If the button is active, and the user did not complete the additional required fields, the validation triggers, and the user is sent to the top of the form, underneath the "Sign" modal header with instructions on what to complete.



User Overview

The eSignature modal allows a user to sign one or multiple items, including Inpatient and Outpatient Medications, Consults, Labs, Notes, Procedures, Rads, and Vitals. Once the user confirms the item(s) being signed in the eSignature modal, the user enters in his/her signature code into the appropriate text field, and selects sign to complete the process.

<sup>1</sup> The required text instructions are read by the Screen Reader at the beginning of the modal. (All other users will see it on the bottom of the modal.) However, when the Screen Reader gets to the bottom of the modal, it does not read the instructions.

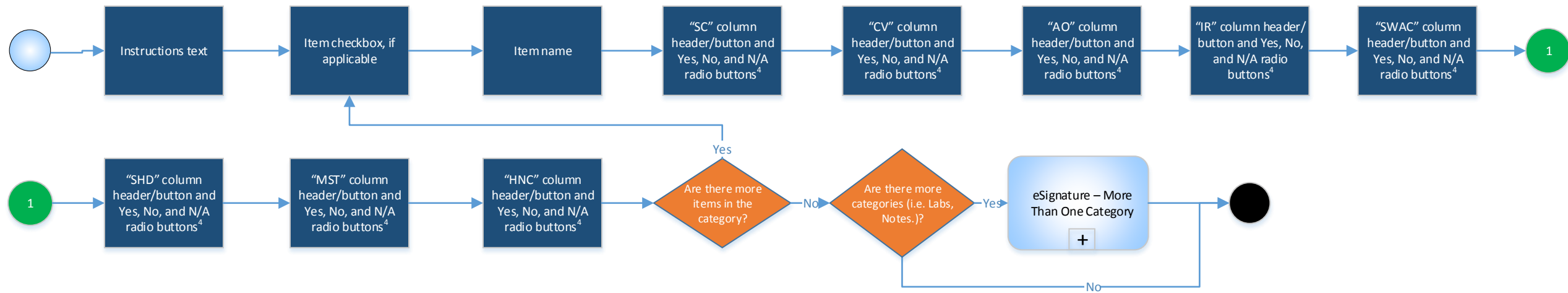
<sup>2</sup> Checkboxes and the "Total Selected" text only appear when the user elects to sign multiple items at one time.

<sup>3</sup> This item only appears when the user is signing Outpatient Medication orders.

<sup>4</sup> When the user selects the "SC", "CV", "AO", etc. buttons, the radio buttons for the respective column is toggled between all Yes's or all No's. However, users who are using the Screen Reader will not have this option.

<sup>5</sup> The Sign button is disabled until the user inserts a signature code into the appropriate text field. If the button is active, and the user did not complete the additional required fields, the validation triggers, and the user is sent to the top of the form, underneath the "Sign" modal header with instructions on what to complete.

Screen Reader with User Interaction



**User Overview**

The eSignature modal allows a user to sign one or multiple items, including Inpatient and Outpatient Medications, Consults, Labs, Notes, Procedures, Rads, and Vitals. Once the user confirms the item(s) being signed in the eSignature modal, the user enters in his/her signature code into the appropriate text field, and selects sign to complete the process.

<sup>1</sup> The required text instructions are read by the Screen Reader at the beginning of the modal. (All other users will see it on the bottom of the modal.) However, when the Screen Reader gets to the bottom of the modal, it does not read the instructions.

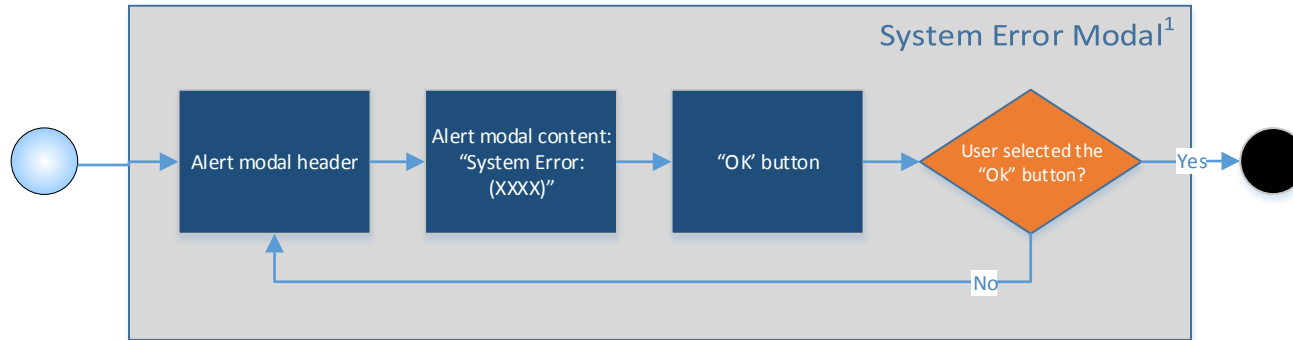
<sup>2</sup> Checkboxes and the “Total Selected” text only appear when the user elects to sign multiple items at one time.

<sup>3</sup> This item only appears when the user is signing Outpatient Medication orders.

<sup>4</sup> When the user selects the “SC”, “CV”, “AO”, etc. buttons, the radio buttons for the respective column is toggled between all Yes’s or all No’s. However, users who are using the Screen Reader will not have this option.

<sup>5</sup> The Sign button is disabled until the user inserts a signature code into the appropriate text field. If the button is active, and the user did not complete the additional required fields, the validation triggers, and the user is sent to the top of the form, underneath the “Sign” modal header with instructions on what to complete.

**DISCLAIMER:** This workflow is used as a reference only and is NOT a part of the official list of deliverables to the VA.



### User Overview

The eSignature modal allows a user to sign one or multiple items, including Inpatient and Outpatient Medications, Consults, Labs, Notes, Procedures, Rads, and Vitals. Once the user confirms the item(s) being signed in the eSignature modal, the user enters in his/her signature code into the appropriate text field, and selects sign to complete the process.

---

<sup>1</sup> System error on submittal. The tray will close, alert modal will appear with an OK button, and the user will have to start over.

**DISCLAIMER:** This workflow is used as a reference only and is NOT a part of the official list of deliverables to the VA.