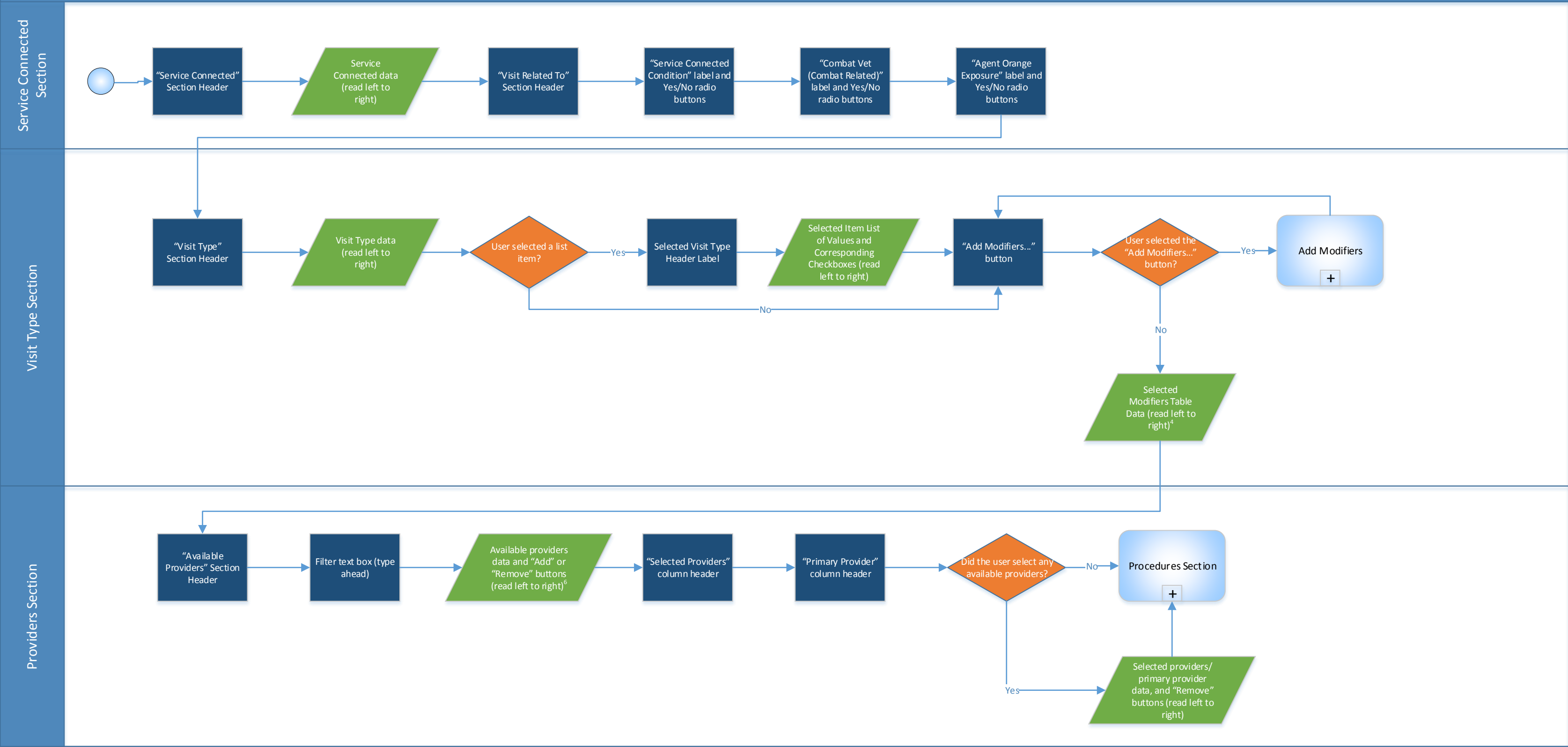


User Overview

The Encounters form provides users the ability to specify the details related to a specific encounter for the patient in context. The user may search for and select diagnoses and conditions for the patient; add comments and condition items to the patient’s record; specify any service connected information; specify the type of visit and any modifiers; indicate the provider(s) for the encounter by filtering through and selecting one from the list of available providers; indicate the primary provider by selecting the appropriate one from the dropdown field; and select procedures and add any additional modifiers.

¹ The required field instructions will be read by the Screen Reader at the beginning of the form, but it is displayed in the footer for other users. When the Screen Reader reads the footer, those instructions will not be read again.





User Overview

The Encounters form provides users the ability to specify the details related to a specific encounter for the patient in context. The user may search for and select diagnoses and conditions for the patient; add comments and condition items to the patient’s record; specify any service connected information; specify the type of visit and any modifiers; indicate the provider(s) for the encounter by filtering through and selecting one from the list of available providers; indicate the primary provider by selecting the appropriate one from the dropdown field; and select procedures and add any additional modifiers.

¹ The name of the Procedure Item that the user chose will appear as the header for the Procedure List Items

² The Selected Procedure data is populated based on what the user selected from the Procedure List Items (i.e. any items where the user selected “Yes”).

³ This sub-process is not included in this workflow.

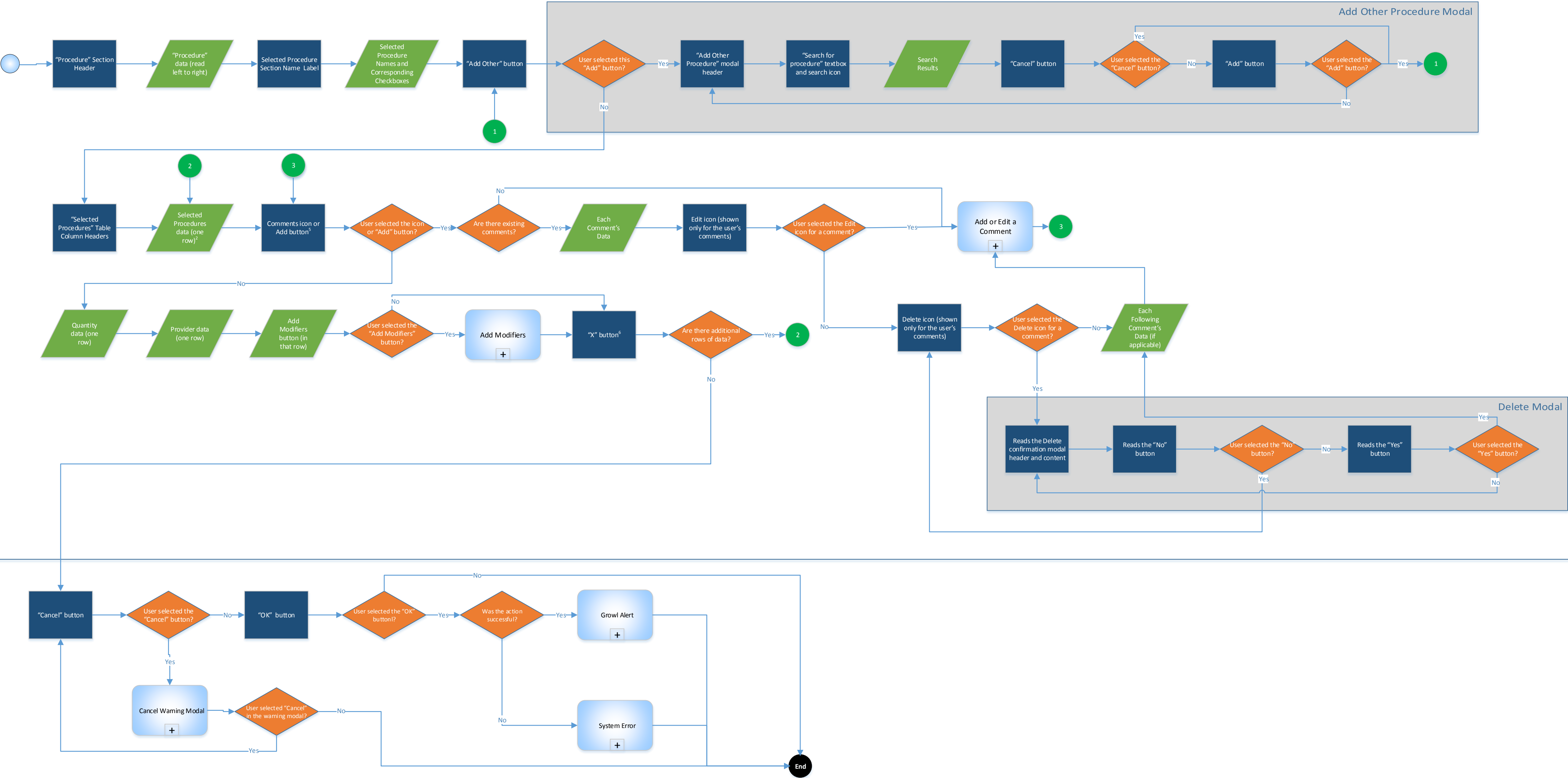
⁴ The specific Type of Visit options and Available/Selected Modifiers is dependent on what the user chooses from the Type of Visit section

⁵ If there are already comments associated with a diagnosis, the user will see an icon in the “Comments” column in the “Selected Diagnoses” section. Otherwise, the user will see the “Add” button.

⁶ If the available provider is already in the “Selected Providers” table, the “Remove” button appears next to the provider’s name in the “Available Providers” table. Otherwise, the “Add” button appears.

Procedure Section

Footer

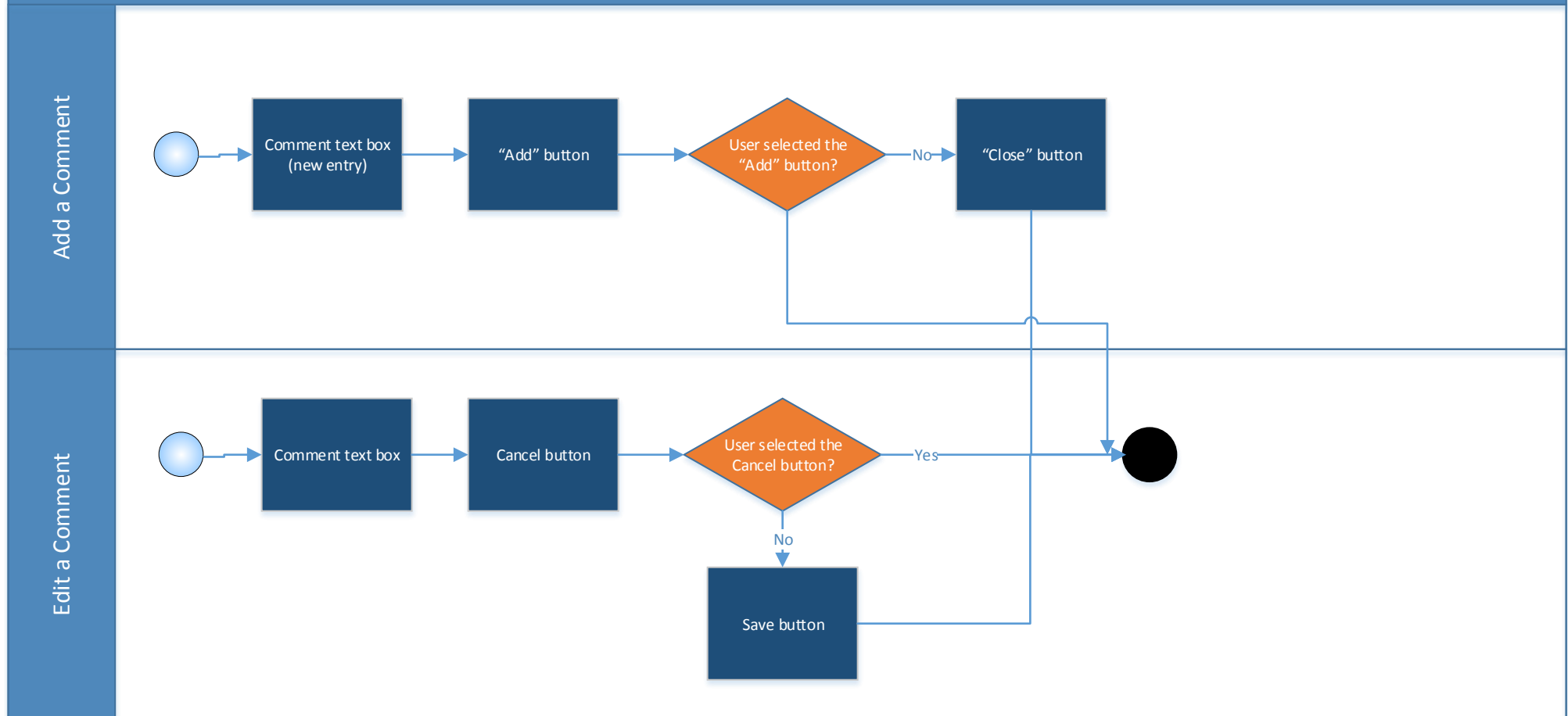


User Overview

The Encounters form provides users the ability to specify the details related to a specific encounter for the patient in context. The user may search for and select diagnoses and conditions for the patient; add comments and condition items to the patient's record; specify any service connected information; specify the type of visit and any modifiers; indicate the provider(s) for the encounter by filtering through and selecting one from the list of available providers; indicate the primary provider by selecting the appropriate one from the dropdown field; and select procedures and add any additional modifiers.

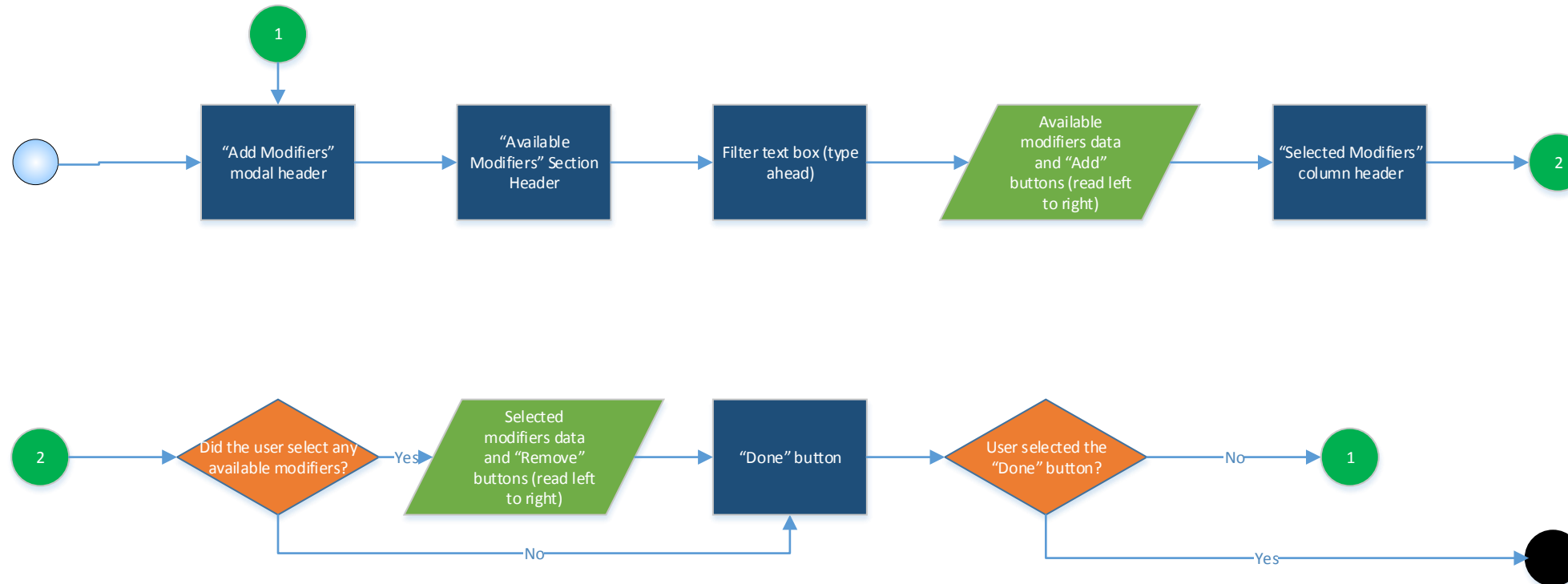
- 1 The name of the Procedure Item that the user chose will appear as the header for the Procedure List Items
- 2 The Selected Procedure data is populated based on what the user selected from the Procedure List Items (i.e. any items where the user selected "Yes").
- 3 This sub-process is not included in this workflow.
- 4 The specific Type of Visit options and Available/Selected Modifiers is dependent on what the user chooses from the Type of Visit section
- 5 If there are already comments associated with a procedure, the user will see an icon in the "Comments" column of the "Selected Diagnoses" section. Otherwise, the user will see the "Add" button.
- 6 If the user selects the "x" button, the selected procedure/modifier is removed from the section, and the screen reader continues to the next item.

DISCLAIMER: This workflow is used as a reference only and is NOT a part of the official list of deliverables to the VA.

**User Overview**

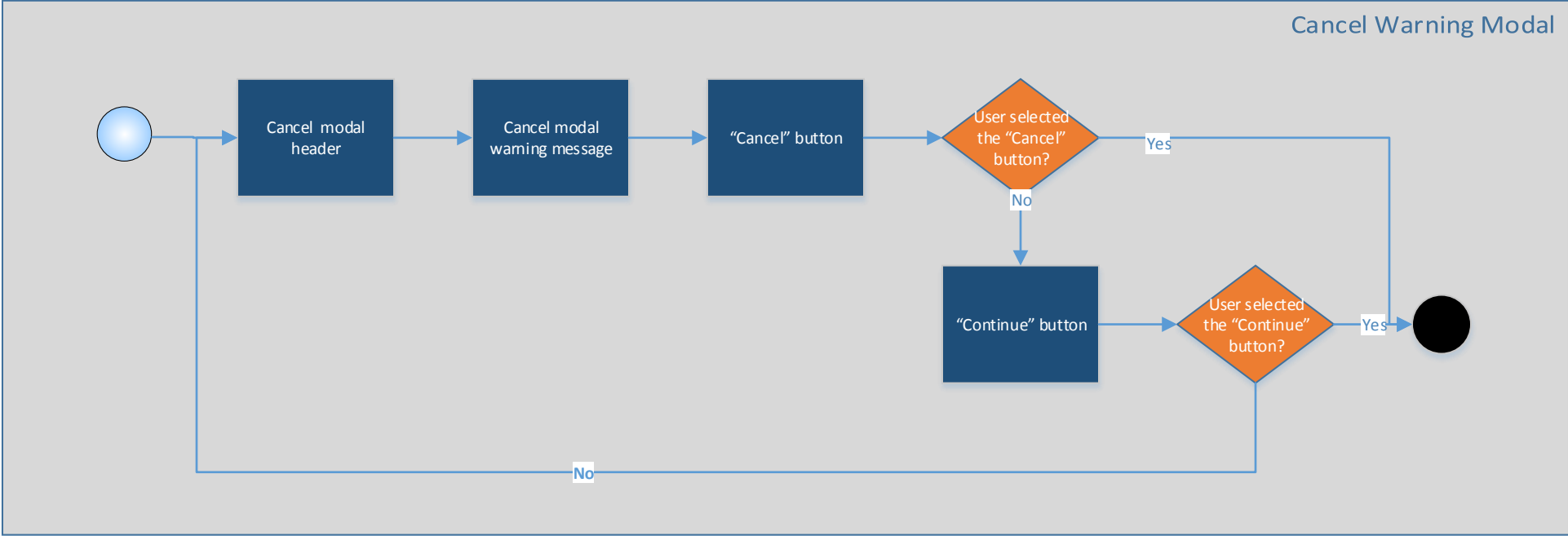
For the “Selected Diagnoses” section and the “Selected Procedures” section, the user may add in additional comments or edit his/her own comments by typing into the field that appears after the user selects the Edit icon next to the appropriate comment. While editing, the user may choose to select the “Cancel” button, which does not save the changes the user made. Otherwise, the user may select the “Save” button to save his/her changes to the comment.

DISCLAIMER: This workflow is used as a reference only and is NOT a part of the official list of deliverables to the VA.

**User Overview**

For the "Diagnosis" and "Procedures" sections, the user may add modifiers by searching for a modifier and selecting the "Add" button next to the applicable one. Once selected, the modifier appears in the "Selected Modifiers" section. The user can then select the "Done" button to add the modifier(s) and return to the previous screen.

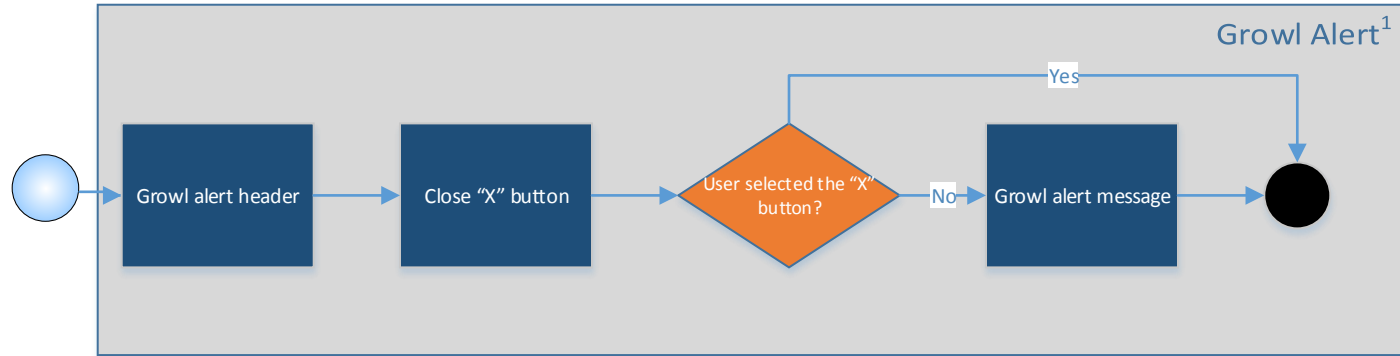
DISCLAIMER: This workflow is used as a reference only and is NOT a part of the official list of deliverables to the VA.



F413 - Encounters – Screen Reader with User Interaction – Growl Alert

Version 5.0

Screen Reader with User
Interaction



¹ The growl alert automatically disappears after a few seconds.

F413 - Encounters – Screen Reader with User Interaction – System Error

Version 5.0

Screen Reader with User Interaction

