

User Overview

The Allergies form allows the user to select an allergen to add to a patient’s record. The user can also select a particular sign or symptom, which, once selected, appears in the “Selected” section. Once the user confirms all applicable symptoms, he/she may add additional comments within the form, and select the “Add” button to officially add the allergen data to the patient’s record or close/cancel the form.

¹ The content under an accordion is only read after the accordion header is opened. Otherwise, the screen reader continues with the next accordion header.

² The user can also select the date icon, which displays the calendar component. However, this option does not meet Section 508 compliance.

³ The user can also select the clock icon, which displays the time picker component. However, this option does not meet Section 508 compliance.

⁴ If the user selects the “Add” button, the symptom is placed into the “Selected Signs/Symptoms” section and the “Add” button in the “Available Signs/Symptoms” section is replaced with the “Remove” button.

⁵ The user may add multiple signs or symptoms. If the user selects the “Remove” button for one of the signs/symptoms, the symptom is placed back into the “Available Signs/Symptoms” section.

⁶ System error on submittal. The tray closes, the alert modal appears with an OK button, and the user has to start over.

⁷ If the user did not enter in all required fields, the focus goes to the first required field that was not completed.

⁸ The required text instructions will be read by the Screen Reader at the beginning of the form whereas other users will see this text at the bottom of the form. When the Screen Reader gets to the bottom of the form, it will not read this text again.

⁹ If the user is creating a new allergy, he/she does not see this button. The “Delete” button appears when the allergy form is still in a draft state. Otherwise, the “Enter in Error” button appears.

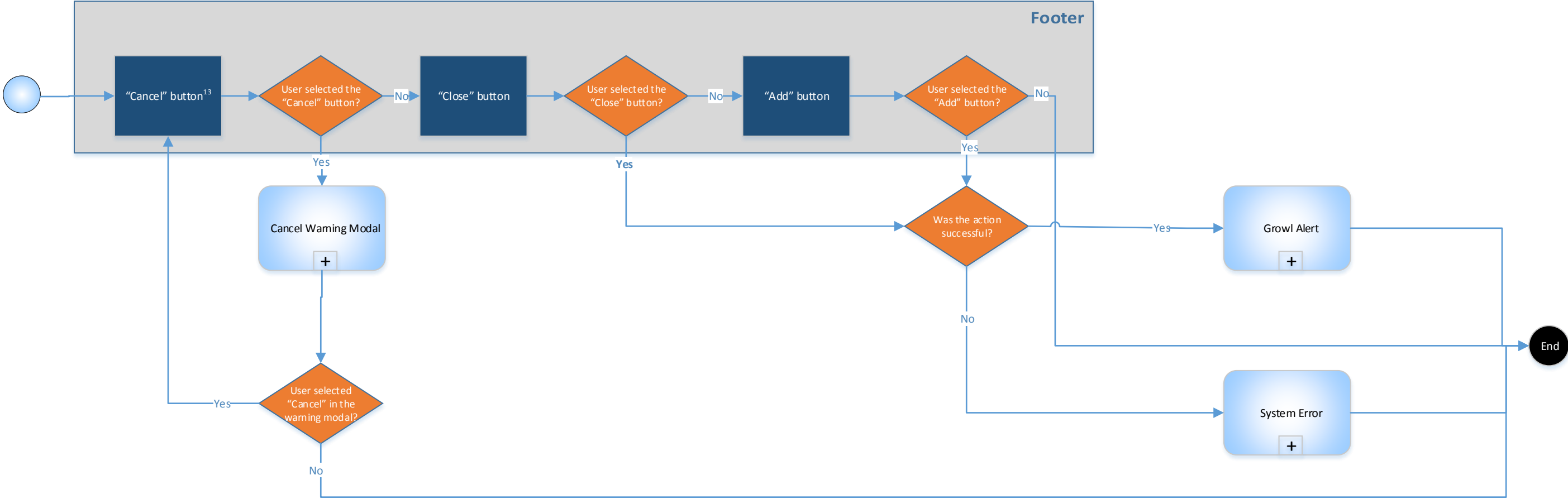
¹⁰ The growl alert automatically disappears after a few seconds.

¹¹ This sub-process is not covered in this workflow.

¹² This option only appears on allergy entries in a draft state.

¹³ This option only appears on allergy entries that have already been added to the patient’s record.

¹⁴ The Encounter Location must be set prior to adding a new allergy. If the user tries to add an allergy without setting the encounter location, a warning modal appears indicating that the action needs the encounter location filled out. Selecting “Yes” in this modal brings up the Visit Management modal to complete. Once completed, the Allergy form returns the user to the previous screen.



User Overview

The Allergies form allows the user to select an allergen to add to a patient’s record. The user can also select a particular sign or symptom, which, once selected, appears in the “Selected” section. Once the user confirms all applicable symptoms, he/she may add additional comments within the form, and select the “Add” button to officially add the allergen data to the patient’s record or close/cancel the form.

¹ The content under an accordion is only read after the accordion header is opened. Otherwise, the screen reader continues with the next accordion header.

² The user can also select the date icon, which displays the calendar component. However, this option does not meet Section 508 compliance.

³ The user can also select the clock icon, which displays the time picker component. However, this option does not meet Section 508 compliance.

⁴ If the user selects the “Add” button, the symptom is placed into the “Selected Signs/Symptoms” section and the “Add” button in the “Available Signs/Symptoms” section is replaced with the “Remove” button.

⁵ The user may add multiple symptoms. If the user selects the “Remove” button, the symptom is placed back into the “Available Signs/Symptoms” section.

⁶ System error on submittal. The tray closes, the alert modal appears with an OK button, and the user has to start over.

⁷ If the user did not enter in all required fields, the focus goes to the first required field that was not completed.

⁸ The required text instructions will be read by the Screen Reader at the beginning of the form whereas other users will see this text at the bottom of the form. When the Screen Reader gets to the bottom of the form, it will not read this text again.

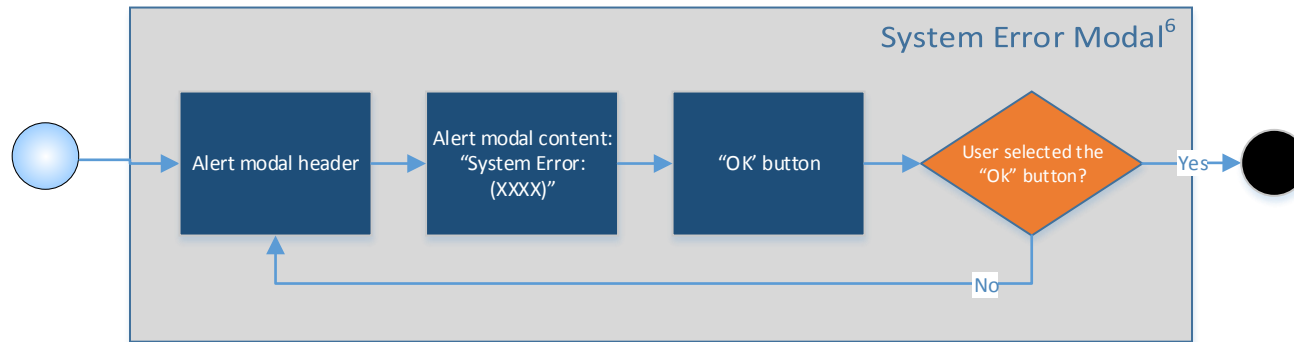
⁹ If the user is creating a new allergy, he/she does not see this button. The “Delete” button appears when the allergy form is still in a draft state. Otherwise, the “Enter in Error” button appears.

¹⁰ The growl alert automatically disappears after 10 seconds and the user returns to the My Observations view.

¹¹ This sub-process is not covered in this workflow.

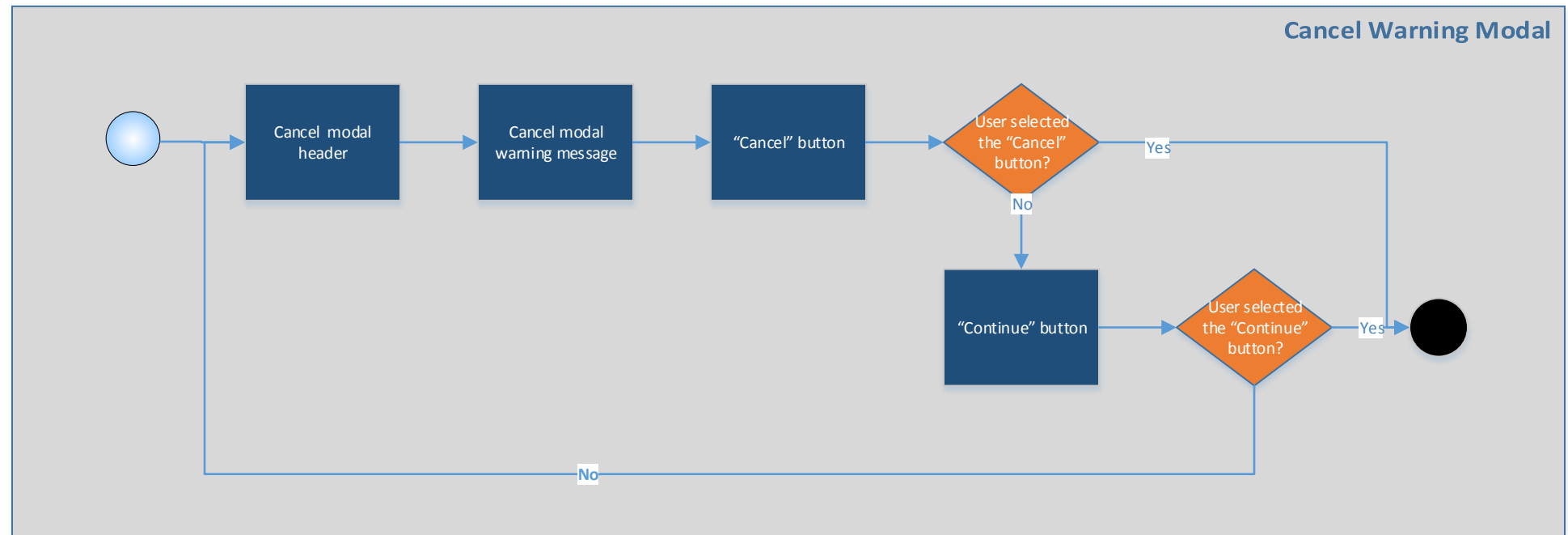
¹² This option only appears on allergy entries in a draft state.

¹³ This option only appears on allergy entries that have already been added to the patient’s record.



- ¹ The content under an accordion is only read after the accordion header is opened. Otherwise, the screen reader continues with the next accordion header.
- ² The user can also select the date icon, which displays the calendar component. However, this option does not meet Section 508 compliance.
- ³ The user can also select the clock icon, which displays the time picker component. However, this option does not meet Section 508 compliance.
- ⁴ If the user selects the "x" button, the symptom is removed from the Selected section and placed back into the Available section.
- ⁵ The user may add multiple symptoms.
- ⁶ System error on submittal. The tray/pop-up closes, the alert modal appears with an OK button, and the user has to start over.
- ⁷ If the user did not enter in all required fields, the focus goes to the first required field that was not completed.
- ⁸ The required text instructions will be read by the Screen Reader at the beginning of the form whereas other users will see this text at the bottom of the form. When the Screen Reader gets to the bottom of the form, it will not read this text again.
- ⁹ If the user is creating a new allergy, he/she does not see this button. The "Delete" button appears when the allergy form is still in a draft state. Otherwise, the "Enter in Error" button appears.
- ¹⁰ The growl alert automatically disappears after 10 seconds and the user returns to the My Observations view.
- ¹¹ This sub-process is not covered in this workflow.
- ¹² This option only appears on allergy entries in a draft state.
- ¹³ This option only appears on allergy entries that have already been added to the patient's record.

DISCLAIMER: This workflow is used as a reference only and is NOT a part of the official list of deliverables to the VA.



¹ The content under an accordion is only read after the accordion header is opened. Otherwise, the screen reader continues with the next accordion header.

² The user can also select the date icon, which displays the calendar component. However, this option does not meet Section 508 compliance.

³ The user can also select the clock icon, which displays the time picker component. However, this option does not meet Section 508 compliance.

⁴ If the user selects the “x” button, the symptom is removed from the Selected section and placed back into the Available section.

⁵ The user may add multiple symptoms.

⁶ System error on submittal. The tray closes, the alert modal appears with an OK button, and the user has to start over.

⁷ If the user did not enter in all required fields, the focus goes to the first required field that was not completed.

⁸ The required text instructions will be read by the Screen Reader at the beginning of the form whereas other users will see this text at the bottom of the form. When the Screen Reader gets to the bottom of the form, it will not read this text again.

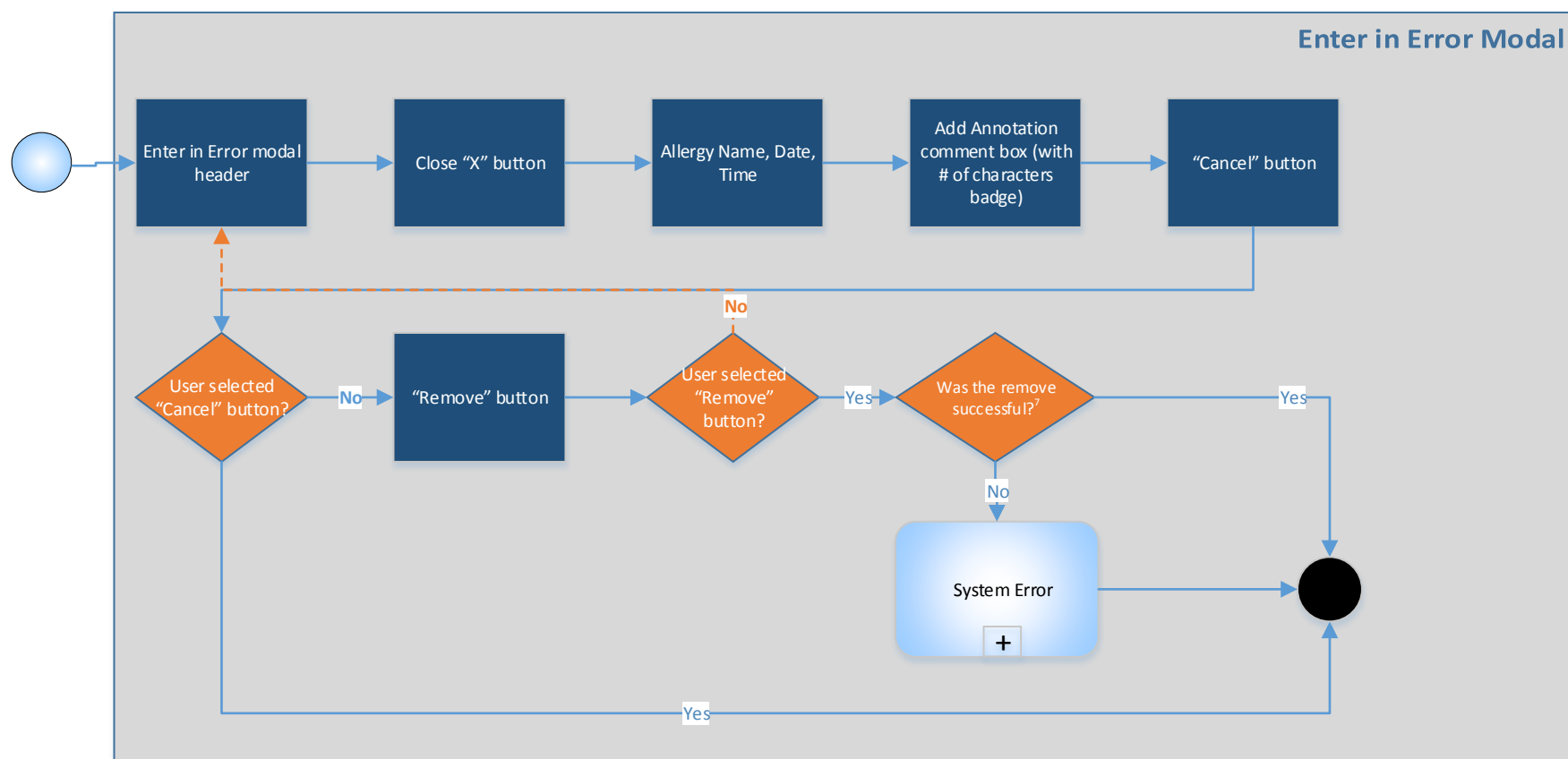
⁹ If the user is creating a new allergy, he/she does not see this button. The “Delete” button appears when the allergy form is still in a draft state. Otherwise, the “Enter in Error” button appears.

¹⁰ The growl alert automatically disappears after 10 seconds and the user returns to the My Observations view.

¹¹ This sub-process is not covered in this workflow.

¹² This option only appears on allergy entries in a draft state.

¹³ This option only appears on allergy entries that have already been added to the patient’s record.



¹ The content under an accordion is only read after the accordion header is opened. Otherwise, the screen reader continues with the next accordion header.

² The user can also select the date icon, which displays the calendar component. However, this option does not meet Section 508 compliance.

³ The user can also select the clock icon, which displays the time picker component. However, this option does not meet Section 508 compliance.

⁴ If the user selects the “x” button, the symptom is removed from the Selected section and placed back into the Available section.

⁵ The user may add multiple symptoms.

⁶ System error on submittal. The tray closes, the alert modal appears with an OK button, and the user has to start over.

⁷ If the user did not enter in all required fields, the focus goes to the first required field that was not completed.

⁸ The required text instructions will be read by the Screen Reader at the beginning of the form whereas other users will see this text at the bottom of the form. When the Screen Reader gets to the bottom of the form, it will not read this text again.

⁹ If the user is creating a new allergy, he/she does not see this button. The “Delete” button appears when the allergy form is still in a draft state. Otherwise, the “Enter in Error” button appears.

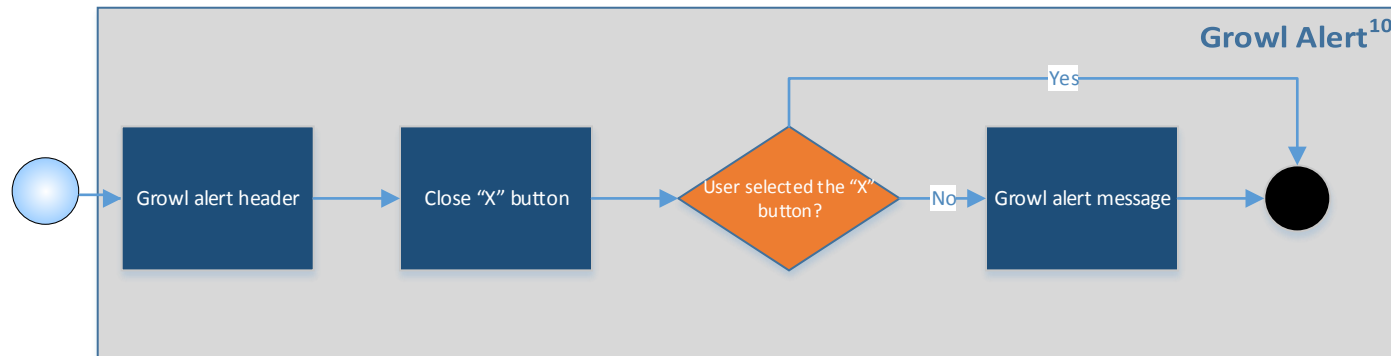
¹⁰ The growl alert automatically disappears after 10 seconds and the user returns to the My Observations view.

¹¹ This sub-process is not covered in this workflow.

¹² This option only appears on allergy entries in a draft state.

¹³ This option only appears on allergy entries that have already been added to the patient’s record.

DISCLAIMER: This workflow is used as a reference only and is NOT a part of the official list of deliverables to the VA.



¹ The content under an accordion is only read after the accordion header is opened. Otherwise, the screen reader continues with the next accordion header.

² The user can also select the date icon, which displays the calendar component. However, this option does not meet Section 508 compliance.

³ The user can also select the clock icon, which displays the time picker component. However, this option does not meet Section 508 compliance.

⁴ If the user selects the “x” button, the symptom is removed from the Selected section and placed back into the Available section.

⁵ The user may add multiple symptoms.

⁶ System error on submittal. The tray closes, the alert modal appears with an OK button, and the user has to start over.

⁷ If the user did not enter in all required fields, the focus goes to the first required field that was not completed.

⁸ The required text instructions will be read by the Screen Reader at the beginning of the form whereas other users will see this text at the bottom of the form. When the Screen Reader gets to the bottom of the form, it will not read this text again.

⁹ If the user is creating a new allergy, he/she does not see this button. The “Delete” button appears when the allergy form is still in a draft state. Otherwise, the “Enter in Error” button appears.

¹⁰ The growl alert automatically disappears after 10 seconds and the user returns to the My Observations view.

¹¹ This sub-process is not covered in this workflow.

¹² This option only appears on allergy entries in a draft state.

¹³ This option only appears on allergy entries that have already been added to the patient’s record.

DISCLAIMER: This workflow is used as a reference only and is NOT a part of the official list of deliverables to the VA.