

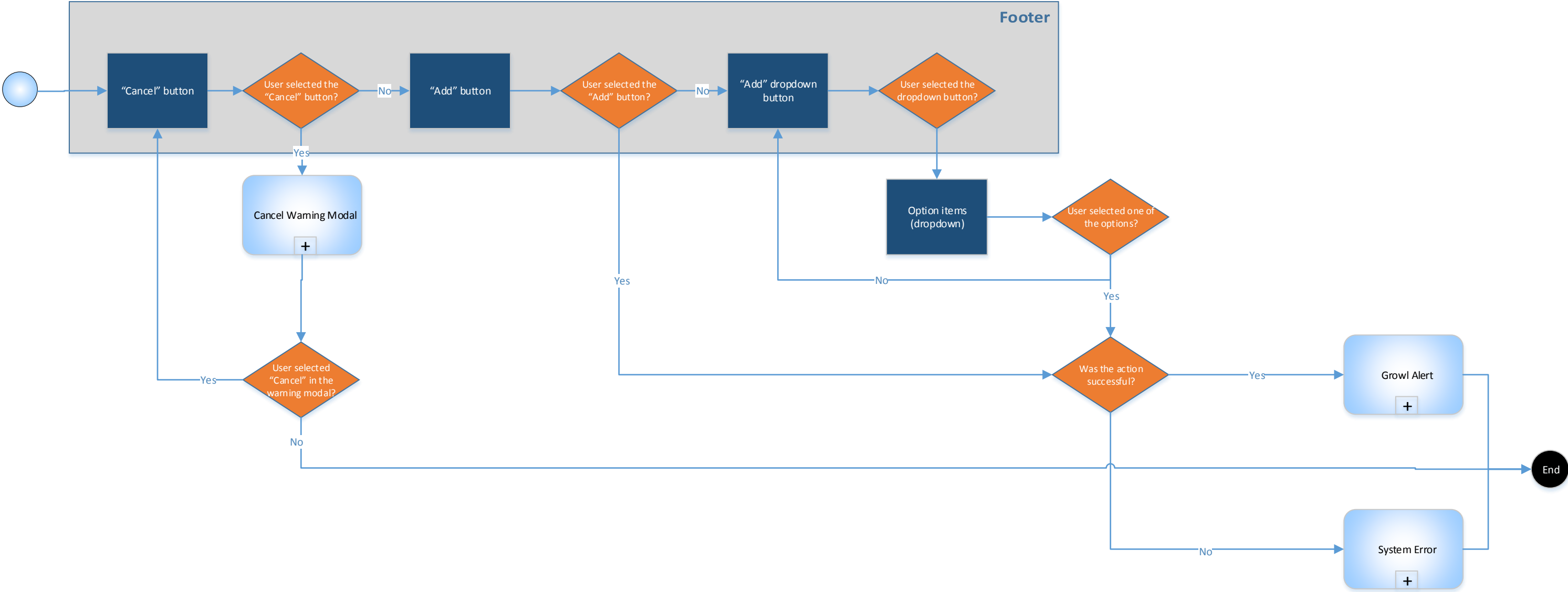
User Workflow Overview

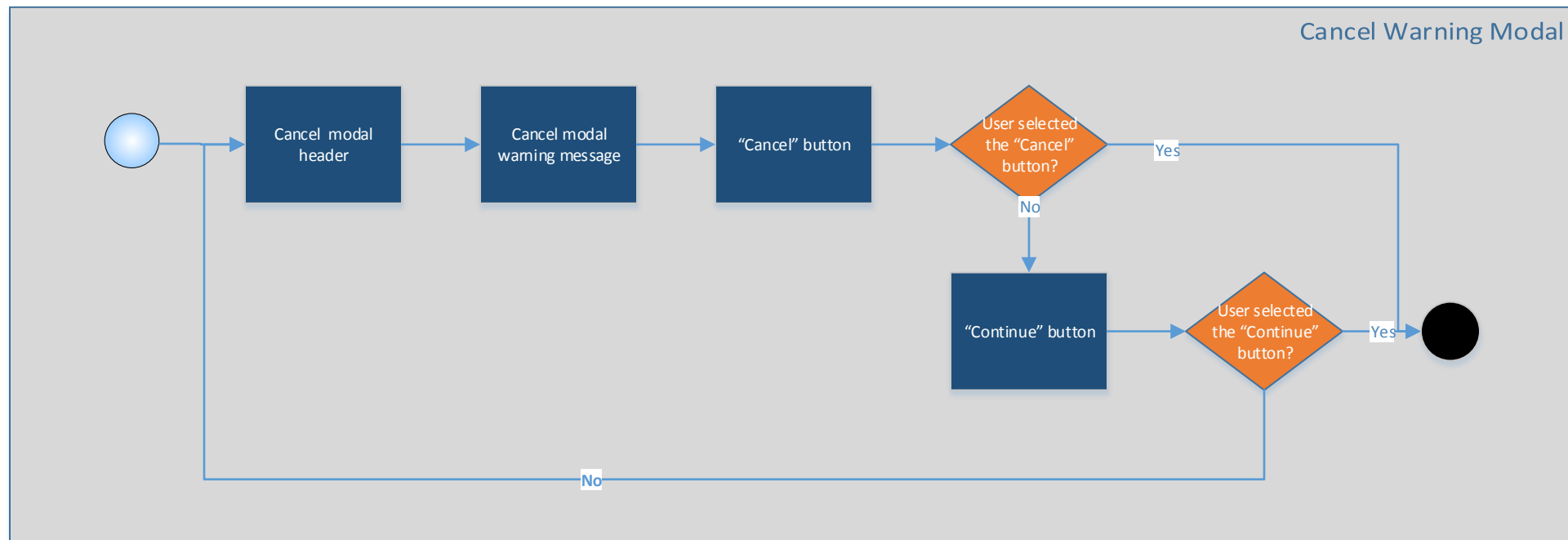
Once the Encounter Location is set, the Immunization form can be accessed from the Observations tray or from the applet. From the form, the user can specify the administered or historical immunization type and required fields, and select the “Add” button to add the immunization to the patient’s record.

¹ The required text instructions will be read by the Screen Reader at the beginning of the form whereas other users will see this text at the bottom of the form. When the Screen Reader gets to the bottom of the form, it will not read this text again.

² If the user did not select the “Administered” or “Historical” radio button, this field is inactive. If the user selects one of the radio buttons but does not choose an immunization type, all other fields on the form are inactive.

³ This sub-process is covered in another workflow.



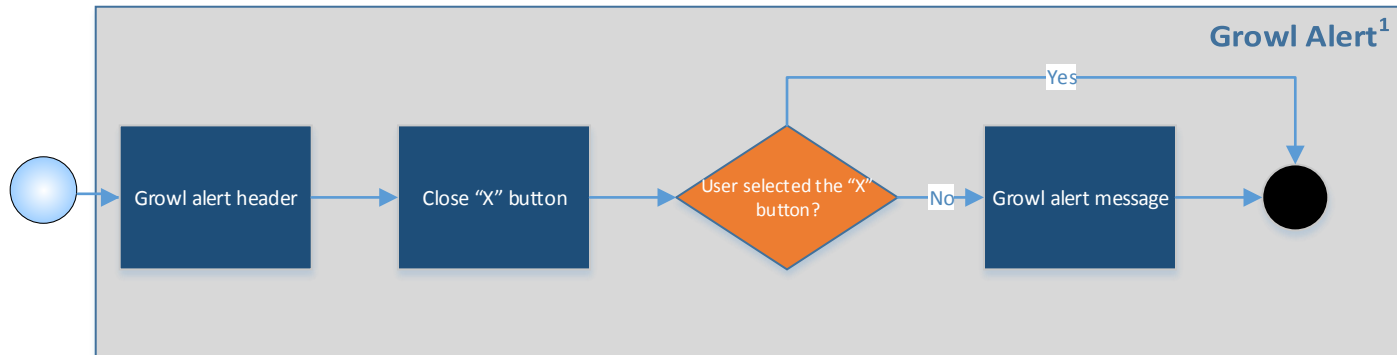


DISCLAIMER: This workflow is used as a reference only and is NOT a part of the official list of deliverables to the VA.

F360 - Enter and Store Immunizations - Screen Reader with User Interaction – Growl Alert

Version 2.0

Screen Reader with User
Interaction



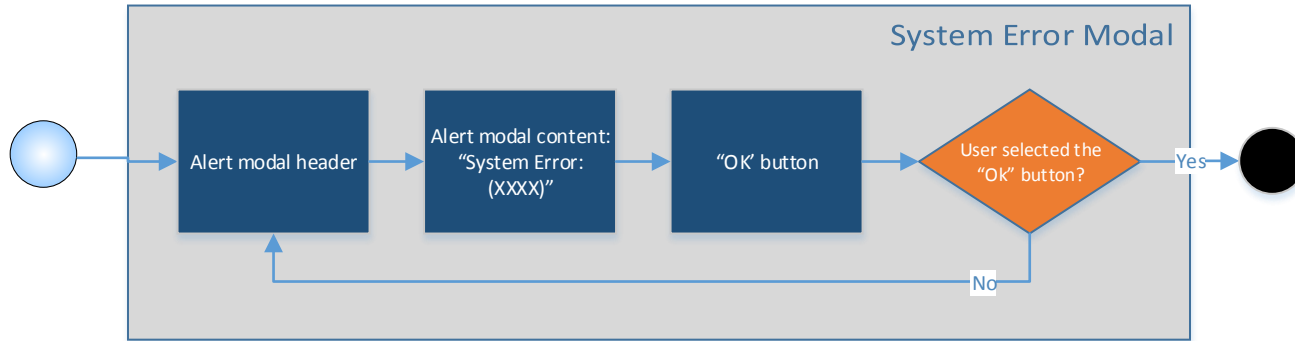
¹ The growl alert automatically disappears after a few seconds.

DISCLAIMER: This workflow is used as a reference only and is NOT a part of the official list of deliverables to the VA.

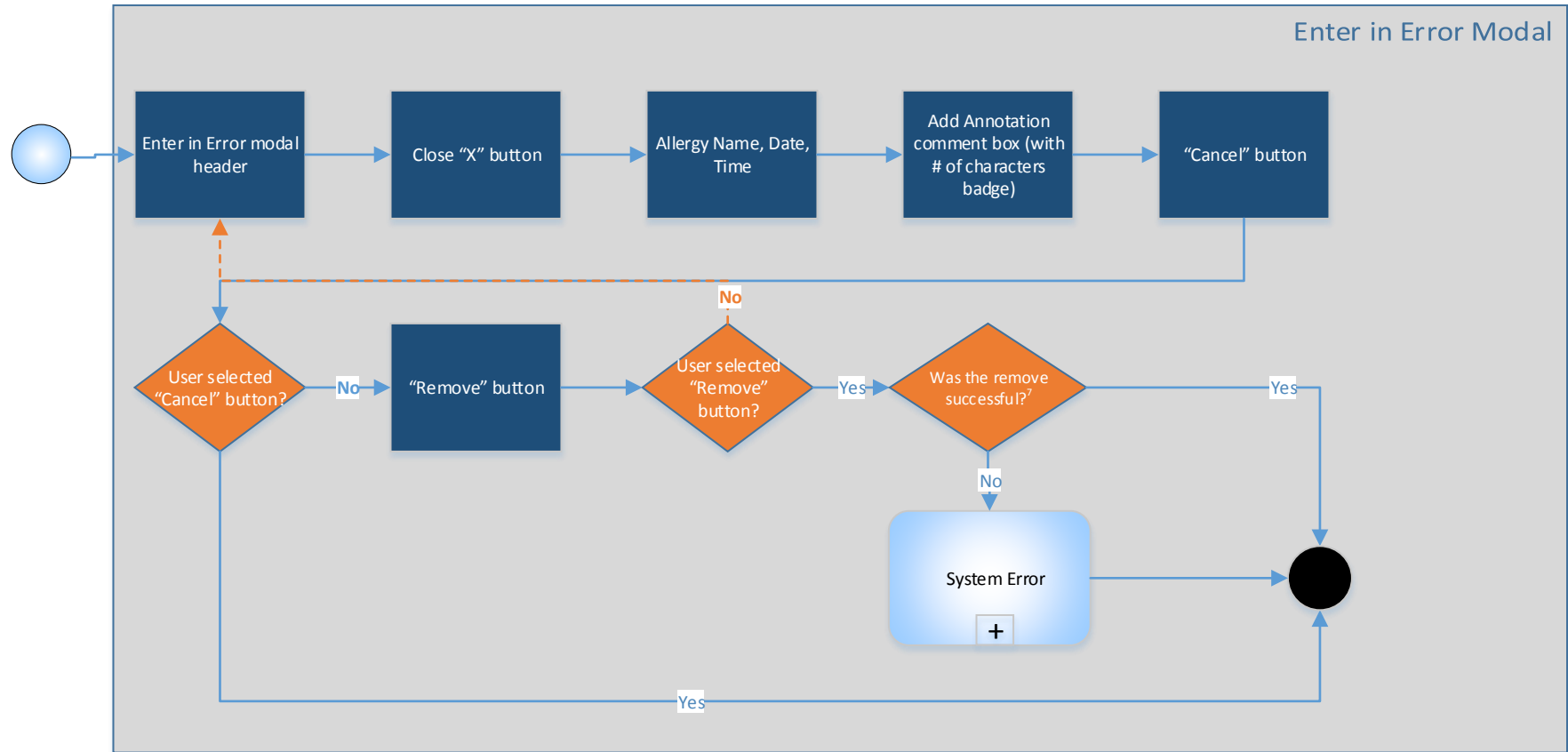
F360 - Enter and Store Immunizations - Screen Reader with User Interaction – System Error Modal

Version 2.0

Screen Reader with User Interaction



DISCLAIMER: This workflow is used as a reference only and is NOT a part of the official list of deliverables to the VA .



DISCLAIMER: This workflow is used as a reference only and is NOT a part of the official list of deliverables to the VA.