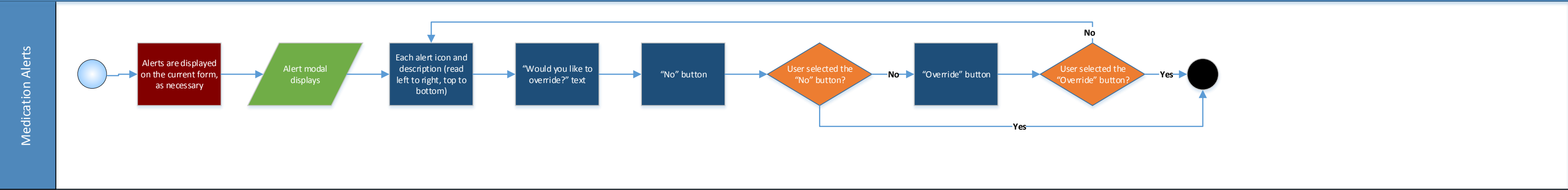


User Workflow Overview
Upon the selection of the Observations Tab, the user can view all observations and arrange the order by their preference. If an outpatient medication is selected from the accordion section, the outpatient medication entry form can reviewed and/or edited. When the user selects the New Entry button, a new tray will appear which allows the user to select "Meds, Outpatient", which opens an entry form for completion pertaining to the patient's outpatient medications.

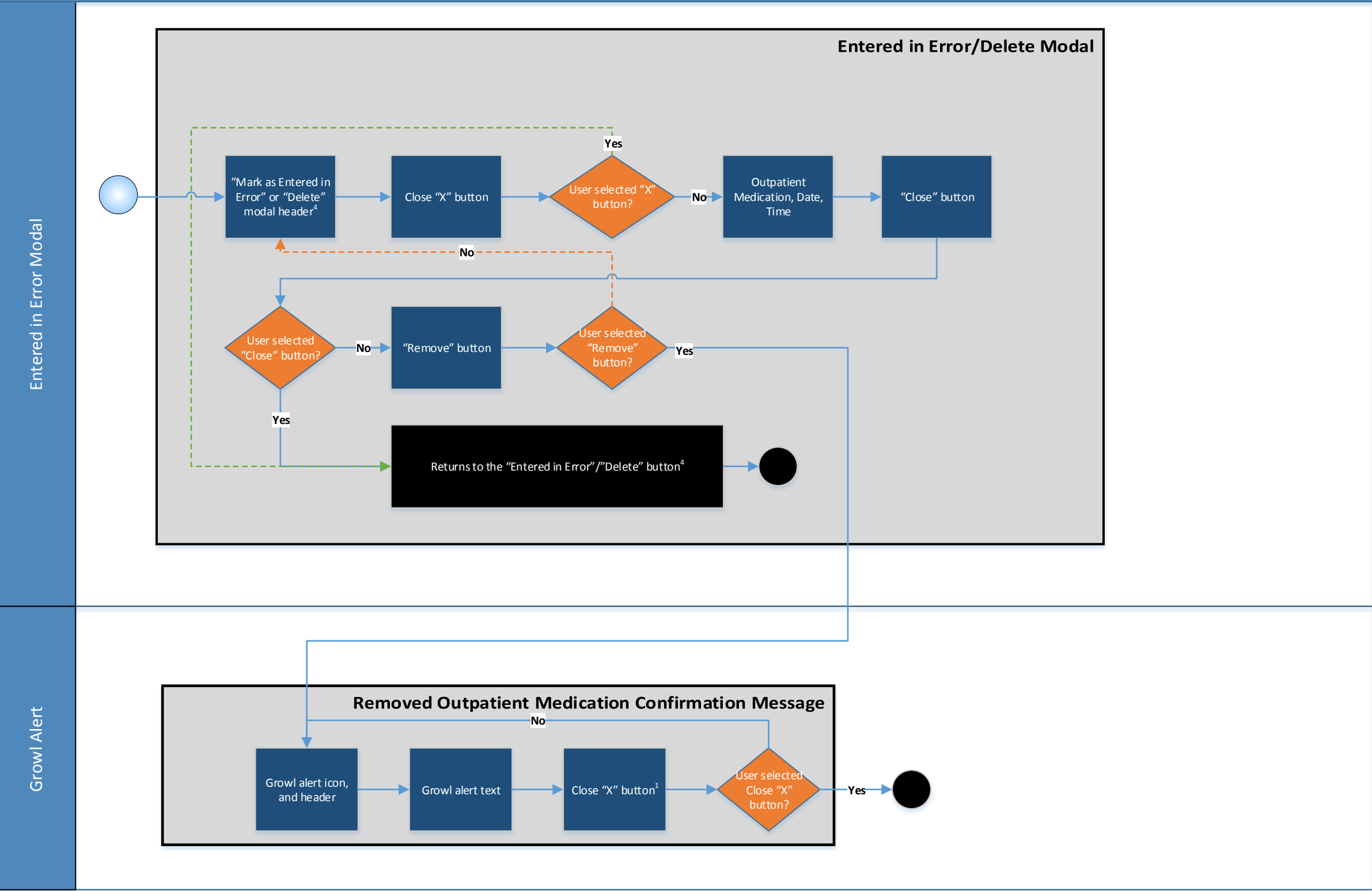
¹ The growl alert will disappear after (X) seconds.
² This sub-process is covered in another workflow.
³ System error on submittal. The tray will close, alert modal will appear with an OK button, and the user will have to start over.
⁴ The "Delete" button appears if the user is creating a new outpatient medication or editing one that is still in a "draft" state. Otherwise, the "Entered in Error" button appears instead.



User Workflow Overview

Upon the selection of the Observations Tab, the user can view all observations and arrange the order by their preference. If an outpatient medication is selected from the accordion section, the outpatient medication entry form can reviewed and/or edited. When the user selects the New Entry button, a new tray will appear which allows the user to select "Meds, Outpatient", which opens an entry form for completion pertaining to the patient's outpatient medications.

¹ The growl alert will disappear after (X) seconds.
² This sub-process is covered in another workflow.
³ System error on submittal. The tray will close, alert modal will appear with an OK button, and the user will have to start over.
⁴ The "Delete" button appears if the user is creating a new outpatient medication or editing one that is still in a "draft" state. Otherwise, the "Entered in Error" button appears instead.



User Workflow Overview

Upon the selection of the Observations Tab, the user can view all observations and arrange the order by their preference. If an outpatient medication is selected from the accordion section, the outpatient medication entry form can reviewed and/or edited. When the user selects the New Entry button, a new tray will appear which allows the user to select “Meds, Outpatient”, which opens an entry form for completion pertaining to the patient’s outpatient medications.

¹ The growl alert will disappear after (X) seconds.

² This sub-process is covered in another workflow.

³ System error on submittal. The tray will close, alert modal will appear with an OK button, and the user will have to start over.

⁴ The “Delete” button appears if the user is creating a new outpatient medication or editing one that is still in a “draft” state. Otherwise, the “Entered in Error” button appears instead.