

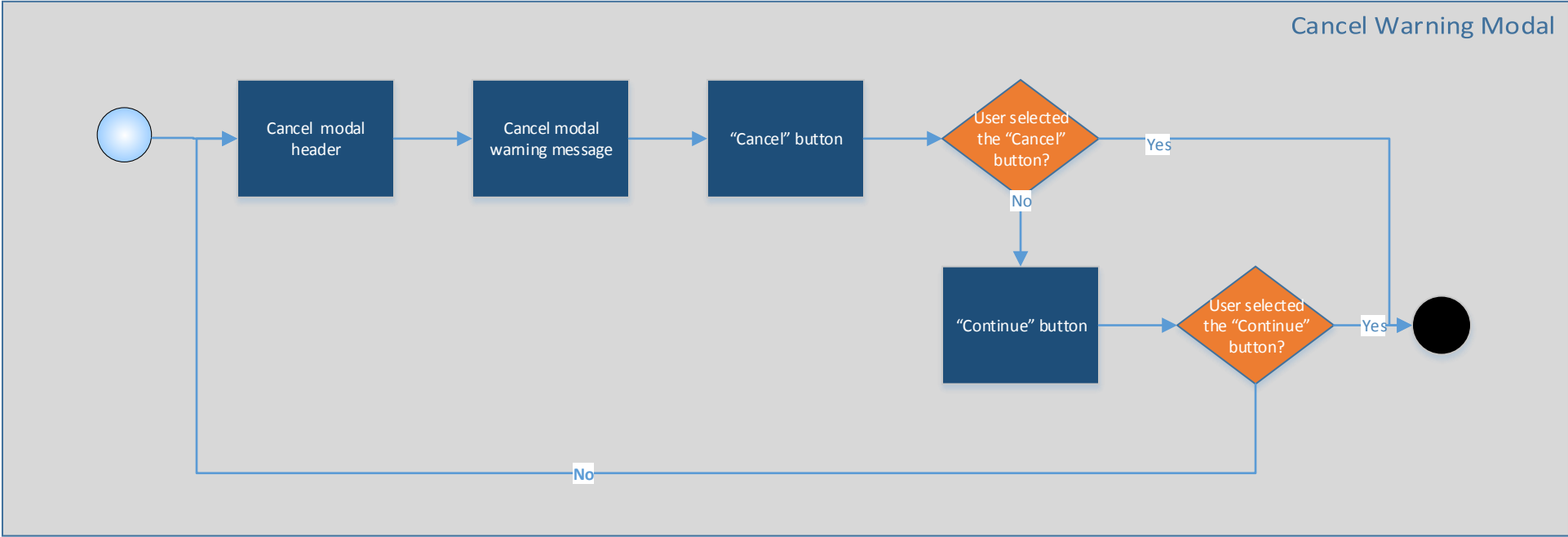
User Workflow Overview

Upon entering the “Provider & Location for Current Activities” modal, the user is able to select an existing clinical appointment or hospital admission or indicate the location, date and time of a new visit. The user must complete all required fields for the selected tab, including the Encounter Provider field, and then select the Set or Cancel button to save or not save the changes, respectively.

¹ The user can also select the date icon, which displays the calendar component. However, this option does not meet Section 508 compliance.

² The user can also select the clock icon, which displays the time picker component. However, this option does not meet Section 508 compliance.

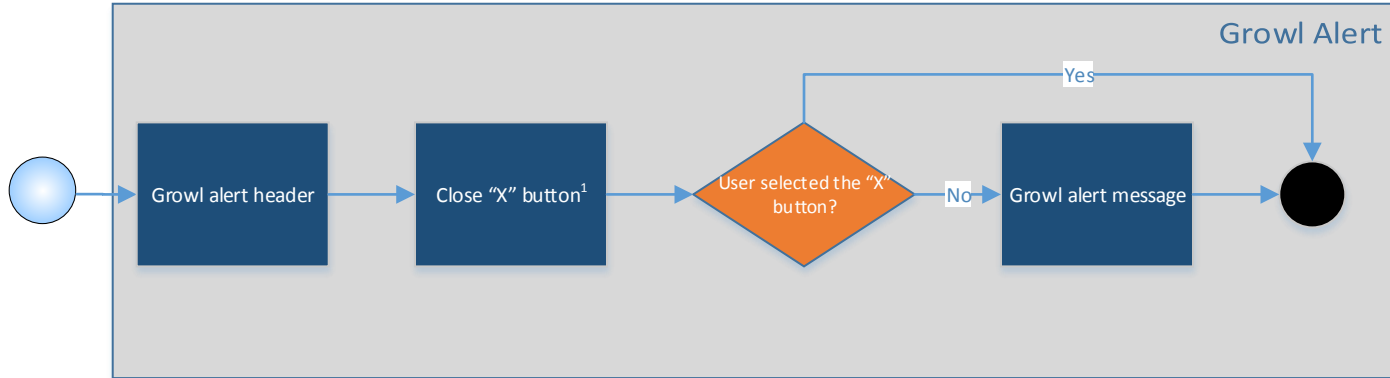
³ This sub-process is documented in another workflow.



F513 - Visit Management (Provider & Location) Modal – Growl Alert

Version 3.0

Screen Reader with User
Interaction



¹ The growl alert disappears after a few seconds.

F513 - Visit Management (Provider & Location) Modal – System Error Modal

Version 3.0

Screen Reader with User Interaction

