





¹ The text about required fields is read at the beginning of the form, yet is still visible to other users at the bottom. When the Screen Reader moves to the bottom of the screen, the text is skipped.

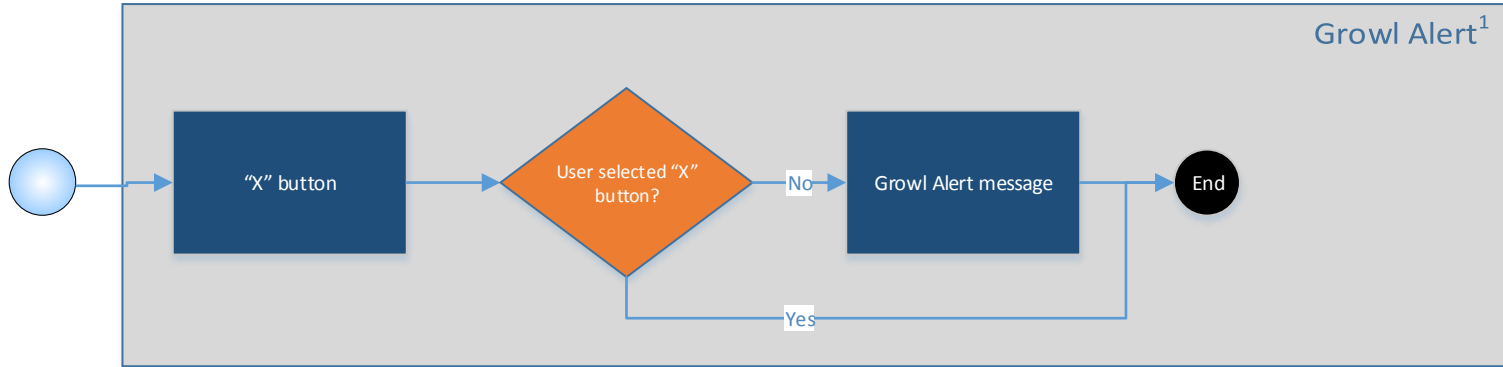
² Once selected, the applicable fields collapse, and the button label changes to "Expand All".

³ Once selected, the remaining fields in that section are no longer visible.

F423 - Enter and Store a Vital – Growl Alert

Version 3.0

Screen Reader with User
Interaction



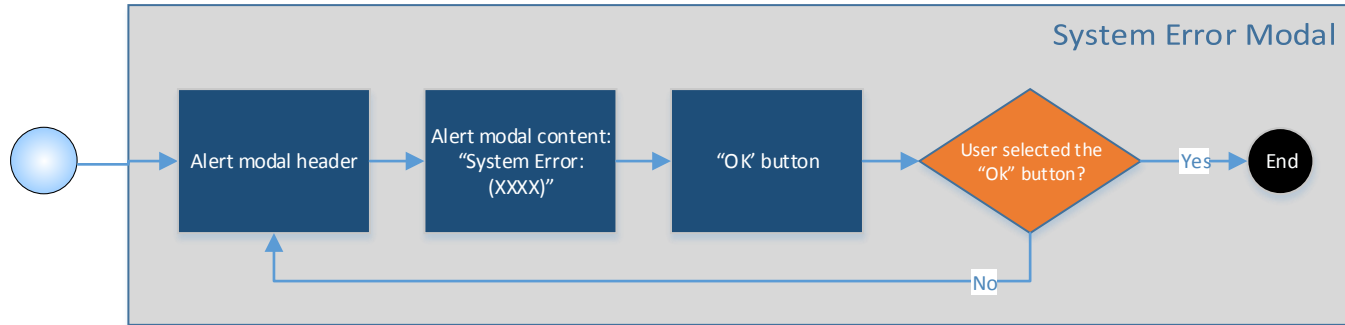
¹ The growl alert will automatically disappear after a few seconds.

DISCLAIMER: This workflow is used for reference only and is NOT a part of the official list of deliverables to the VA.

F423 - Enter and Store a Vital – System Error

Version 3.0

Screen Reader with User
Interaction



DISCLAIMER: This workflow is used for reference only and is NOT a part of the official list of deliverables to the VA.