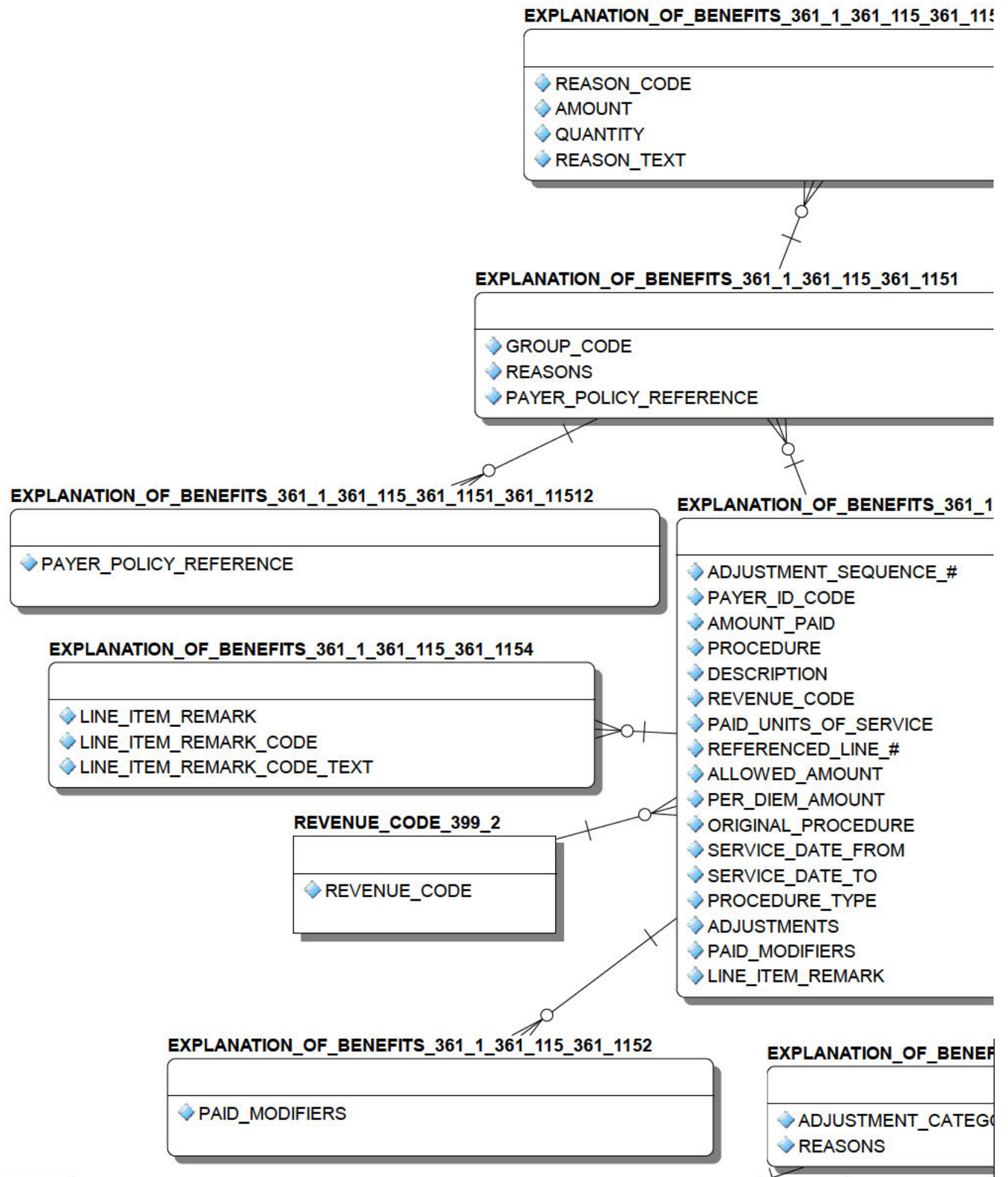


(1,1)

(1,2)

(1,3)



(2,2)

51_361_11511

_361_115

FITS_361_1_361_11

ORY_(GRP_CODE)

◆ BILL
◆ PAYER_NAME
◆ PAYER_ID
◆ EOB_TYPE
◆ ENTRY_DATE/TIME
◆ EOB_PAID_DATE
◆ TRACE_NUMBER
◆ CROSSED_OVER_NAME
◆ CROSSED_OVER_ID
◆ DRG_CODE_USED
◆ DRG_WEIGHT_USED
◆ DISCHARGE_FRACTION
◆ CLAIM_STATUS
◆ ICN
◆ INSURANCE_SEQUENCE
◆ REVIEW_STATUS
◆ MANUAL_ENTRY?
◆ MANUALLY_ENTERED_BY
◆ TRANSMIT_BILL
◆ FINAL_REVIEW_ACTION
◆ CLAIM_STATUS_CODE
◆ PAYER_PAID_AMT
◆ PATIENT_RESPONSIBILITY_AMT
◆ COVERED_AMT
◆ DISCOUNT_AMT
◆ PER_DAY_LIMIT_AMT
◆ INTEREST_AMT
◆ TAX_AMT
◆ TOTAL_BEFORE_TAXES_AMT
◆ STATEMENT_START_DATE
◆ STATEMENT_END_DATE
◆ CLAIM_RECEIVED_DATE
◆ COVERAGE_EXPIRATION_DATE
◆ CORRECTED_PRIORITY_PAYER_NAME
◆ CORRECTED_PRIORITY_PAYER_TYPE
◆ CORRECTED_PRIORITY_PAYER_ID
◆ OTHER_SUBSCRIBER_NAME
◆ TOTAL_ALLOWED_AMT
◆ TOTAL_SUBMITTED_CHARGES
◆ NEGATIVE_REIMBURSEMENT_AMT
◆ M-CARE_OUTP_REIMBURS_RATE
◆ M-CARE_OUTP_HCPCS_PAYMNT_AMT
◆ M-CARE_OUTP_REMARKS_CODE-1
◆ M-CARE_OUTP_REMARKS_CODE-2
◆ M-CARE_OUTP_REMARKS_CODE-3
◆ M-CARE_OUTP_REMARKS_CODE-4
◆ M-CARE_OUTP_REMARKS_CODE-5
◆ M-CARE_ESRD_PAID_AMT
◆ M-CARE_NON-PAYABLE_PROF_COMP
◆ M-CARE_INP_COV_DAYS/VISIT_CT
◆ M-CARE_INP_LIFETM_PSYCH_DY_CT
◆ M-CARE_INP_CLAIM_DRG_AMT
◆ M-CARE_INP_CAP_EXCEPTION_AMT
◆ M-CARE_INP_DISPROP_SHARE_AMT
◆ M-CARE_INP_MSP_PASS_THRU_AMT
◆ M-CARE_INP_PPS_CAPITAL_AMT

EDI_TRANSMIT_BILL_364

◆ BILL_NUMBER

EXPLANATION_OF_BENEFIT

◆ MESSAGE_STORAGE_EI

EDI_TRANSMISSK

◆ BATCH_NUMB

ELECTRONIC_REMIT

◆ SEQUENCE_#
◆ EOB_DETAIL
◆ AMOUNT_PAID
◆ INSURANCE_COM
◆ INVALID_BILL_NU
◆ ERROR_CATEGOI
◆ UNSPECIFIC_ERR
◆ TRANSFERRED_C
◆ TRANSFER_STAT
◆ TRANSFERRED_T
◆ TRANSFERRED_C
◆ ERROR_STATUS
◆ REVERSAL
◆ FREE_TEXT_PAT
◆ TRANSFER_RECE
◆ BILL_NUMBER_FF
◆ BILLING PROVIDE

(2,3)

TS_361_1_361_12

RRORS

AR_EDI_CARC_DATA_345_345_04

DESCRIPTION

ON_BATCH_364_1

ER

AR_EDI_CARC_DATA_345

CODE
START_DATE
STOP_DATE
MODIFIED_DATE
DESCRIPTION
NOTES

INSTITUTION_4

NAME

ELECTRONIC_REMITTANCE_ADVICE_344_4_344_41_344_411

RAW_DATA

TANCE_ADVICE_344_4_344_41

ELECTRONIC_REMITTANCE_ADVICE_344_4_344_41_344_412

RESOLUTION_LOG

IPANY_ON_BILL

MBER

RY

IOR

OUT_MSG_#

US

O_SITE

DATE

ENT_NAME

EIVED_OTHER_SITE

ROM_PAYER

ER NPI

(3,1)

EXPLANATION_OF_BENEFITS_361_1_361_11_361_111

- ◆ REASON_CODE
- ◆ AMOUNT
- ◆ QUANTITY
- ◆ REASON_TEXT

EXPLANATION_OF_BENEFITS_361_1_361_18

- ◆ BILL_#
- ◆ AMOUNT
- ◆ BILL_REFERENCE

EXPLANATION_OF_BENEFITS_361_1_361_1101_361_11016

- ◆ OTHER_CLAIM_NUMBERS

BILL/CLAIMS_399

- ◆ BILL_NUMBER

EXPLANATION_OF_I

- ◆ REVIEW_DATE/T
- ◆ REVIEWED_BY
- ◆ COMMENTS

EXPLANATION_OF_BENEFITS_

- ◆ COMMENTS

EXPLANATION_OF_BENEFITS_361_1_361_1101

--

◆ COMMENTS

(3,2)

◆ M-CARE_INP_PPS_CAP_FSP-DRG_AMT
◆ M-CARE_INP_PPS_CAP_HSP-DRG_AMT
◆ M-CARE_INP_PPS_CAP_DSH-DRG_AMT
◆ M-CARE_INP_OLD_CAPITAL_AMT
◆ M-CARE_INP_PPS_CAPITAL_IME_AMT
◆ M-CARE_INP_PPS_OP_HOS_DRG_AMT
◆ M-CARE_INP_COST_REPORT_DAY_CT
◆ M-CARE_INP_PPS_OP_FED_DRG_AMT
◆ M-CARE_INP_PPS_CAP_OUTLIER_AMT
◆ M-CARE_INP_INDIRECT_TEACH_AMT
◆ M-CARE_INP_NON-PAY_PROF_COMP
◆ MEDICARE_NON-COVERED_DAYS
◆ M-CARE_INP_PYMNT_REMARK_CODE-1
◆ REMARK_CODE-1_SHORT_TEXT
◆ M-CARE_INP_PYMNT_REMARK_CODE-2
◆ REMARK_CODE-2_SHORT_TEXT
◆ M-CARE_INP_PYMNT_REMARK_CODE-3
◆ REMARK_CODE-3_SHORT_TEXT
◆ M-CARE_INP_PYMNT_REMARK_CODE-4
◆ REMARK_CODE-4_SHORT_TEXT
◆ M-CARE_INP_PYMNT_REMARK_CODE-5
◆ REMARK_CODE-5_SHORT_TEXT
◆ NEW_PATIENT_NAME
◆ NEW_PATIENT_ID
◆ CORRECTED_DATA_MESSAGE
◆ TRANSFERRED_IN
◆ AR_AMOUNTS_DISTRIBUTION
◆ 835_CLAIM_LEVEL_ADJUSTMENTS
◆ 835_LINE_LEVEL_ADJUSTMENTS
◆ MESSAGE_STORAGE_ERRORS
◆ REVIEW_DATE/TIME
◆ PAYER_CONTACT_NAME
◆ CONTACT_NUMBER_1
◆ CONTACT_TYPE_1
◆ CONTACT_NUMBER_2
◆ CONTACT_TYPE_2
◆ CONTACT_NUMBER_3
◆ CONTACT_TYPE_3
◆ AUTO_BILL_MESSAGE
◆ AUTO_BILL_MESSAGE_DATE/TIME
◆ ORIGINAL_06_RECORD_DATA
◆ MAILMAN_HEADER_INFORMATION
◆ BATCH_NUMBER
◆ RETURN_MESSAGE_ID
◆ LAST_EDITED_BY
◆ LAST_EDITED_DATE
◆ MESSAGE_CHECKSUM
◆ MOVE/COPY_HISTORY

◆ RENDERING/SERV
◆ ENTITY_TYPE_QU
◆ RENDERING/SERV
◆ BILLING_PROV_C
◆ REN_PROV_COM
◆ RAW_DATA
◆ FORMATTED_MES
◆ RESOLUTION_LO
◆ BILL_REFERENCE

INSURANCE_COMPANY_36

◆ NAME

ELECTRONIC_REMITTANCE_ADVICE_1

◆ REFERENCE_NUMBER
◆ ADJUSTMENT_CODE
◆ ADJUSTMENT_AMOUNT
◆ ADJUSTMENT_TEXT

BENEFITS_361_1_361_121

IME

361_1_361_121_361_1211

AR_BATCH_PAYMEN

◆ RECEIPT_#

NEW_PERSON_200

VICING_PROV_NPI
ALIFIER
VICING_PROV_NAME
OMMENT
MENT

SSAGE_DATA
G
E_NUMBER

344_4_344_42

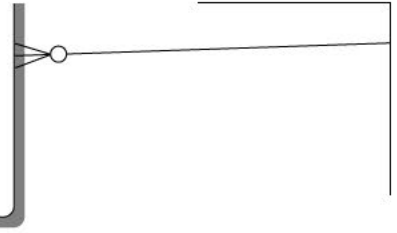
ELECTRONIC_REMITTANCE_ADVICE_344_4

- ◆ ENTRY
- ◆ TRACE_NUMBER
- ◆ INSURANCE_CO_ID
- ◆ ERA_DATE
- ◆ TOTAL_AMOUNT_PAID
- ◆ PAYMENT_FROM
- ◆ FILE_DATE/TIME
- ◆ RECEIPT
- ◆ EFT_MATCH_STATUS
- ◆ ERA_TYPE
- ◆ INDIVIDUAL_EOB_COUNT
- ◆ MAIL_MESSAGE
- ◆ CHECK_#
- ◆ DETAIL_POST_STATUS
- ◆ EXPECTED_PAYMENT_METHOD_CODE
- ◆ ERA_DETAIL
- ◆ ERA_LEVEL_ADJUSTMENTS
- ◆ CONTACT_NAME
- ◆ CONTACT_NUMBER_1
- ◆ CONTACT_TYPE_1
- ◆ CONTACT_NUMBER_2
- ◆ CONTACT_TYPE_2
- ◆ CONTACT_NUMBER_3
- ◆ CONTACT_TYPE_3
- ◆ PAYER_WEB_SITE_ADDRESS
- ◆ DATE_POSTED_TO_SUSPENSE
- ◆ POSTED_TO_SUSPENSE_BY
- ◆ PAPER_EOB_ENTRY

T_344

(4,1)

- ◆ DATE/TIME_EOB_MOVED
- ◆ EOB_MOVE/COPY_BY
- ◆ MOVE/COPY_REASON
- ◆ ORIGINAL_BILL_NUMBER
- ◆ MOVE/COPY_EVENT
- ◆ OTHER_CLAIM_NUMBERS



(4,2)

NAME

(4,3)