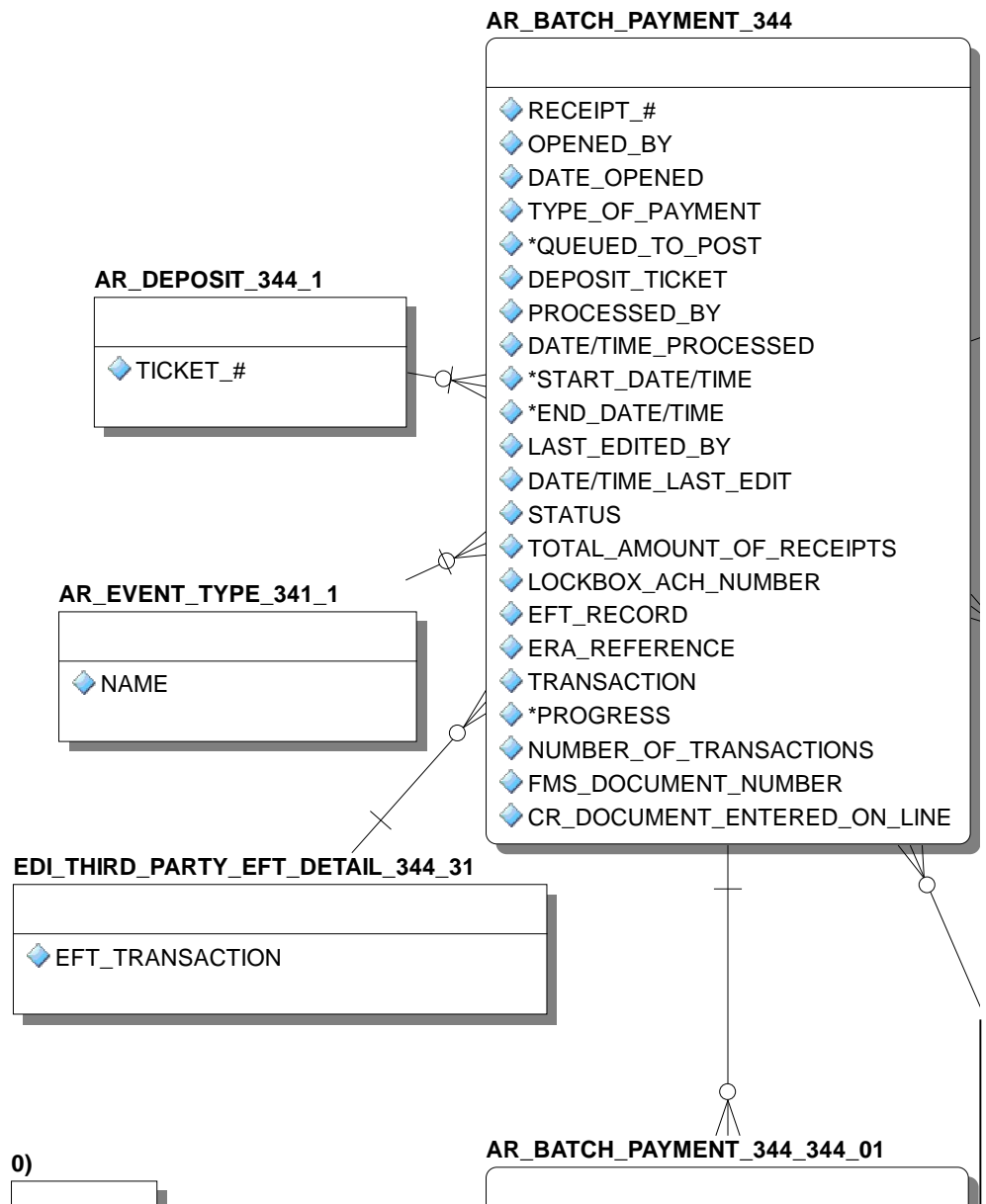


(1,1)



(1,2)

#### RCDPE\_SUSPENSE\_AUDIT\_344\_71

- ◆ TIMESTAMP
- ◆ USER
- ◆ RECEIPT\_#
- ◆ TRANSACTION\_#
- ◆ AMOUNT
- ◆ CLAIM\_#
- ◆ DISPOSITION\_OF\_SUSPENSE
- ◆ REASON\_TEXT

#### RCDPE\_CARC-RARC\_AUTO\_DEC\_344\_62

- ◆ CARC/RARC\_CODE
- ◆ ENABLE\_AUTO\_DECREASE
- ◆ Date\_Added
- ◆ Updated\_By
- ◆ Date\_Last\_Updated
- ◆ Amount
- ◆ Comment

#### MAIL\_GROU

- ◆ NAME

#### AR\_SITE\_PARAMETER\_342

- ◆ PATCH\_POST\_INIT\_HIS
- ◆ START\_DATE\_AND\_TIM
- ◆ END\_DATE\_AND\_TIME

#### NEW\_PERSON\_200

- ◆ NAME

#### AR\_SITE\_PARAMETER\_342\_342\_0

- ◆ RATE\_EFFECTIVE\_DATE
- ◆ ANNUAL\_INTEREST\_RATE
- ◆ MONTHLY\_ADMIN\_CHARGE

JP\_3\_8

2\_342\_01

STORY  
1E

04

#### AR\_SITE\_PARAMETER\_342

- ◆ SITE
- ◆ SUPPRESS\_RIGHTS\_&\_OBLIGATIONS
- ◆ LAST\_BILL\_NUMBER
- ◆ UB\_PRINTER
- ◆ PHARMACY\_COPAY\_STATEMENT\_INFO
- ◆ LAST\_EVENT\_NUMBER
- ◆ ALC\_(DEPOSITS)
- ◆ REPORT\_PRINTER
- ◆ SUPPRESS\_ZERO\_BALANCE
- ◆ DATE/TIME\_SYSTEM\_LAST\_UPDATED
- ◆ SITE\_STATEMENT\_DAY
- ◆ LOCAL\_CCPC\_STATEMENTS
- ◆ CCPC\_START-UP\_DATE
- ◆ STATEMENT\_COMMENT\_1
- ◆ STATEMENT\_COMMENT\_2
- ◆ DATE\_OF\_MASTER\_IRS\_OFFSET
- ◆ DATE\_OF\_IRS\_OFFSET\_LETTER
- ◆ IRS\_OFFSET\_AMOUNT
- ◆ RESPONSIBLE\_FOR\_IRS\_CODESHEETS
- ◆ TOP\_STATION\_CODE
- ◆ RATE\_EFFECTIVE\_DATE
- ◆ BURSTER\_MACHINE\_CODE
- ◆ INTEGRATED\_SITE
- ◆ NUMBER\_OF\_DAYS\_EFT\_UNMATCHED
- ◆ NUMBER\_OF\_DAYS\_ERA\_UNMATCHED
- ◆ MAX\_DAYS\_ENTRY\_SUSPENDED
- ◆ AUTO\_POST\_MEDICAL\_PAPER\_BILLS
- ◆ AUTO\_POST\_PHARMACY\_PAPER\_BILLS
- ◆ #\_OF\_DAYS\_FOR\_RD\_ELIG\_CHG\_RPT
- ◆ NUMBER\_OF\_DAYS\_FOR\_DMC\_REPORTS
- ◆ PATCH\_POST\_INIT\_HISTORY
- ◆ VITRIA STANDARD DIRECTORY

(2,1)

0)
----

96)

96)
-----

**ELECTRONIC\_REMITTANCE\_ADVICE\_344\_4\_344\_41\_344\_411**

RAW_DATA

**ELECTRONIC\_REMITTANCE\_ADVICE\_344\_4\_344\_41\_344\_412**

RESOLUTION_LOG

- TRANSACTION
- CONFIRMATION\_#
- ACCOUNT
- PAYMENT\_AMOUNT
- AMOUNT\_PROCESSED
- DATE\_OF\_PAYMENT
- CHECK\_#
- CHECK\_BANK/ROUTING\_#
- PATIENT\_NAME\_OR\_BILL\_NUMBER
- DATE\_OF\_CHECK
- CREDIT\_CARD\_#
- ENTERED\_BY
- CHECK\_ACCOUNT\_#
- EDITED\_BY
- ACCOUNT\_LOOKUP
- BATCH\_NUMBER
- SEQUENCE\_NUMBER
- PAYMENT\_TYPE
- UNAPPLIED\_DEPOSIT\_NUMBER
- CLEAR\_SUSPENSE\_FMS\_DOC\_ID#
- ERA\_WORKLIST\_SEQUENCE
- AUTO\_DECREASE\_ADJUSTMENT
- POSTING\_ERROR
- COMMENT

**ELECTRONIC\_REMITTANCE\_ADVICE\_344\_4\_344\_41\_344\_413**

REFERENCE_NUMBER
ADJUSTMENT_CODE
ADJUSTMENT_AMOUNT
ADJUSTMENT_TEXT

(2,2)

- ◆ MONTHLY\_ADMIN\_CHARGE
- ◆ ANNUAL\_PENALTY\_RATE
- ◆ LITIGATION\_REFERRAL\_FEE

**INSTITUTION**

◆ NAME

**ELECTRONIC\_REMITTANCE\_ADVICE\_344\_4**

- ◆ ENTRY
- ◆ TRACE\_NUMBER
- ◆ INSURANCE\_CO\_ID
- ◆ ERA\_DATE
- ◆ TOTAL\_AMOUNT\_PAID
- ◆ PAYMENT\_FROM
- ◆ FILE\_DATE/TIME
- ◆ RECEIPT
- ◆ EFT\_MATCH\_STATUS
- ◆ ERA\_TYPE
- ◆ INDIVIDUAL\_EOB\_COUNT
- ◆ MAIL\_MESSAGE
- ◆ CHECK\_#
- ◆ DETAIL\_POST\_STATUS
- ◆ EXPECTED\_PAYMENT\_METHOD\_CODE
- ◆ ERA\_DETAIL
- ◆ ERA\_LEVEL\_ADJUSTMENTS
- ◆ CONTACT\_NAME
- ◆ CONTACT\_NUMBER\_1
- ◆ CONTACT\_TYPE\_1
- ◆ CONTACT\_NUMBER\_2
- ◆ CONTACT\_TYPE\_2
- ◆ CONTACT\_NUMBER\_3
- ◆ CONTACT\_TYPE\_3
- ◆ PAYER\_WEB\_SITE\_ADDRESS
- ◆ DATE\_POSTED\_TO\_SUSPENSE
- ◆ POSTED\_TO\_SUSPENSE\_BY
- ◆ PAPER\_EOB\_ENTRY

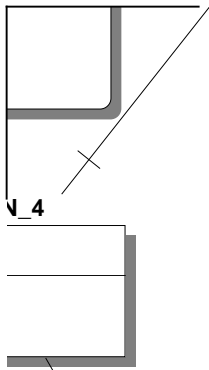
**EXPLANATION\_OF\_BENEFITS\_361\_1**

◆ BILL

**INSURANCE\_COMPANY\_36**

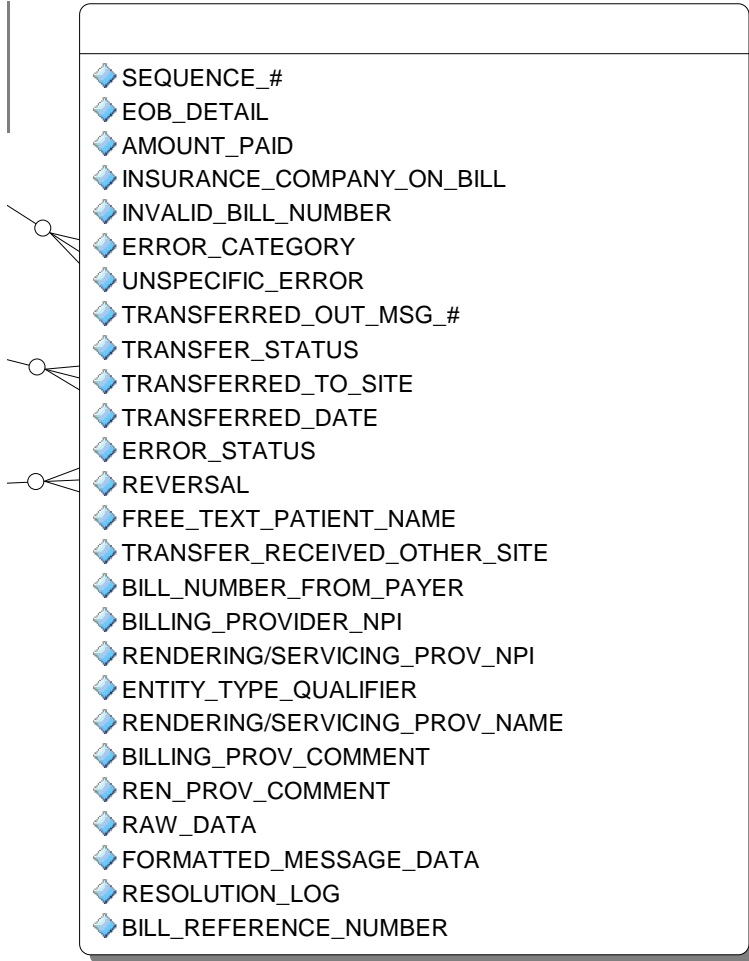
◆ NAME

4\_4\_344\_42



- ◆ MAIL\_GROUP
- ◆ DATE\_OF\_LAST\_TRANSMISSION
- ◆ CBO\_STATUS
- ◆ MAXIMUM\_NUMBER\_RECORDS
- ◆ SYSTEM\_TYPE
- ◆ LEGACY\_SITE?
- ◆ PRIMARY\_DOMAIN
- ◆ EXTRACT\_RUNNING?
- ◆ EMERGENCY\_RESPONSE\_BEGIN\_DATE
- ◆ EMERGENCY\_RESPONSE\_END\_DATE

#### ELECTRONIC\_REMITTANCE\_ADVICE\_344\_4\_344\_41



- ◆ SEQUENCE\_#
- ◆ EOB\_DETAIL
- ◆ AMOUNT\_PAID
- ◆ INSURANCE\_COMPANY\_ON\_BILL
- ◆ INVALID\_BILL\_NUMBER
- ◆ ERROR\_CATEGORY
- ◆ UNSPECIFIC\_ERROR
- ◆ TRANSFERRED\_OUT\_MSG\_#
- ◆ TRANSFER\_STATUS
- ◆ TRANSFERRED\_TO\_SITE
- ◆ TRANSFERRED\_DATE
- ◆ ERROR\_STATUS
- ◆ REVERSAL
- ◆ FREE\_TEXT\_PATIENT\_NAME
- ◆ TRANSFER\_RECEIVED\_OTHER\_SITE
- ◆ BILL\_NUMBER\_FROM\_PAYER
- ◆ BILLING\_PROVIDER\_NPI
- ◆ RENDERING/SERVICING\_PROV\_NPI
- ◆ ENTITY\_TYPE\_QUALIFIER
- ◆ RENDERING/SERVICING\_PROV\_NAME
- ◆ BILLING\_PROV\_COMMENT
- ◆ REN\_PROV\_COMMENT
- ◆ RAW\_DATA
- ◆ FORMATTED\_MESSAGE\_DATA
- ◆ RESOLUTION\_LOG
- ◆ BILL\_REFERENCE\_NUMBER