

Department of Veterans Affairs

Camp Lejeune-Veterans (CL-V)

Enrollment System (ES) 4.2

System Design Document



March 2015

CL Release 1.0 & 2.0

ES Release 4.2

Revision History

Date	Version	Description	Author
4/1/2015	2.3	CL-V Removing and Reinstating Requirements For a Phased Rollout of Camp Lejeune Functionality Un-graying requirements.	
3/31/2015	2.2	Gray out CLEAR, VOA, and HL7	
03/30/2015	2.1	Format/edit	
03/26/2015	2.0	Include detailed software design specifications	
03/11/2015	1.9	Format/edit	
03/11/2015	1.8	Added history page of Military Service	
03/10/2015	1.7	Updated screen shots, included software detailed design	
02/28/2015	1.6	Format/edit	
02/25/2015	1.5	Updated after more changes to RTM/RSD	
01/23/2015	1.4	Update after changes to RTM/RSD	
01/02/2015	1.3	Addressed reviewer comments	
12/30/2014	1.2	Iterative enhancement following RTM & User Stories effort	
12/03/2014	1.1	Completed technical edit	
11/10/2014	1.0	Initial creation	

Artifact Rationale

The System Design Document (SDD) is a dual-use document that provides the conceptual design as well as the as-built design. This document will be updated as the product is built, to reflect the as-built product. Per the Project Management Accountability System (PMAS) Guide, the SDD as a conceptual design is required prior to the Milestone 1 Review. (Sections 1, 2, 3, 4, 5, 7, 9 need to be populated, as applicable.) The as-built design for each delivery must be incorporated prior to the Milestone 2 Review. (The entire document needs to be populated or updated, as applicable.)

Table of Contents

1. Introduction	1
1.1. Purpose of the SDD	1
1.2. Identification	1
1.3. Scope	1
1.4. Constraining Policies, Directives and Procedures	3
1.5. User Characteristics	4
1.6. Relationship to Other Documents and Plans	4
1.7. Definitions, Acronyms, and Abbreviations.....	4
1.8. References	5
2. Background	6
2.1. Overview of the System	6
2.2. Overview of the Business Process	8
2.3. Business Benefits.....	8
2.4. Assumptions and Constraints.....	8
2.4.1. Design Assumptions	8
2.4.2. Design Constraints.....	9
2.4.3. Design Trade-offs	9
2.5. Overview of the Significant Requirements	9
2.5.1. Overview of Significant Functional Requirements	9
2.5.2. Overview of Functional Workload / Performance Requirements	10
2.5.3. Overview of Operational Requirements.....	10
2.5.4. Overview of the Technical Requirements.....	10
2.5.5. Overview of the Security or Privacy Requirements.....	10
2.5.6. Overview of System Criticality and High Availability Requirements.....	11
2.5.7. Single Sign-on Requirement.....	11
2.5.8. Requirement for Use of Enterprise Portals	11
2.5.9. Special Device Requirements.....	11
2.6. Legacy System Retirement.....	11
3. Conceptual Design.....	12
3.1. Conceptual Application Design.....	12
3.1.1. Application Context.....	12
3.1.2. High-Level Application Design	13
3.1.3. Application Locations	13
3.2. Conceptual Data Design.....	13
3.2.1. Project Conceptual Data Model	13
3.2.2. Database Information	13
3.2.3. User Interface Data Mapping	14

3.2.3.1.	Application Screen Interface	15
3.2.3.1.1.	Current Military Service	15
3.2.3.1.2.	Update Eligibility	17
3.2.3.1.3.	View Eligibility	18
3.2.3.1.4.	Add a Person	19
3.2.3.2.	Application Report Interface	20
3.2.3.2.1.	Total Eligibility Factors Report	20
3.2.3.2.2.	CLEAR Extract Reports	21
3.2.3.3.	Unmapped Data Element	22
3.3.	Conceptual Infrastructure Design	22
3.3.1.	System Criticality and High Availability	22
3.3.2.	Special Technology	22
3.3.3.	Technology Locations	22
3.3.4.	Conceptual Infrastructure Diagram	22
3.3.4.1.	Location of Environments and External Interfaces	22
3.3.4.2.	Conceptual Production String Diagram	22
4.	System Architecture	23
4.1.	Hardware Architecture	23
4.2.	Software Architecture	23
4.3.	Network Architecture	23
4.4.	Service Oriented Architecture / ESS	23
4.5.	Enterprise Architecture	23
5.	Data Design	24
5.1.	DBMS Files	24
5.2.	Non-DBMS Files	24
5.3.	Data View	25
6.	Detailed Design	26
6.1.	Hardware Detailed Design	26
6.2.	Software Detailed Design	26
6.2.1.	Business Object Model	26
6.2.2.	Persistence Layer - Hibernate Mapping	26
6.2.3.	Messaging – ZEL segment	27
6.2.4.	CLEAR Extract	28
6.2.5.	OPP Extract	29
6.2.6.	E&E Web Service	30
6.2.7.	VOA Web Service	30
6.2.8.	User Interface Layer	30
6.2.9.	ILOG rules	34
6.3.	Network Detailed Design	42
6.4.	Service Oriented Architecture / ESS Detailed Design	43

7. External System Interface Design.....	43
7.1. Interface Architecture.....	43
7.2. Interface Detailed Design	43
8. Human-Machine Interface	43
8.1. Interface Design Rules	43
8.2. Inputs	43
8.3. Outputs	43
8.4. Navigation Hierarchy	43
9. Security and Privacy.....	43
9.1. Security.....	43
9.2. Privacy	43
Attachment A – Approval Signatures.....	44
A. Additional Information.....	45
A.1. RTM.....	45
A.2. Packaging and Installation.....	45
A.3. Design Metrics	45
A.4. Acronym List and Glossary	45
A.5. Required Technical Documents	45
A.6. Attach Documents	45

1. Introduction

Public Law 112-154 was enacted to furnish VA medical services and hospital care to Veterans stationed at Camp Lejeune between August 1, 1953 and December 31, 1987. Veterans serving at this location for at least 30 days may suffer from medical conditions and/or illnesses arising from their exposure to water contaminated by hazardous chemicals.

Software enhancements to Veterans Health Information Systems and Technology Architecture (VistA) and to the centralized Health Eligibility Center (HEC) Enrollment System Core (ESC) are required for maintaining the Camp Lejeune-Veteran (CL-V) support information in the Veteran records. This implies that enhancements to the HL-7 messaging between ESC and VistA are also required as part of the software development effort.

Additional software enhancements are required for receiving regular data feeds from the Camp Lejeune Environment Action Report (CLEAR) database and updates to the ES records with the incoming data stream. CLEAR is internally maintained by the HEC in which, manual data entry pertaining to Camp Lejeune-Veterans is performed by HEC operators. VA, however, intends to retire the CLEAR database after the data contained in it has been fully identified for storage into other repositories. Following the retirement of CLEAR, this feature of the software enhancement will cease to function.

1.1. Purpose of the SDD

The purpose of this document is to focus on the technical design for the ES enhancements for CL-V requirements. It will describe the technical design necessary to implement this enhancement. By default, it will also cover the incoming/outgoing HL-7 messaging to the VistA Registration, Eligibility, and Enrollment (REE) application. The CLEAR data feed as a batch process is also covered, but, as already mentioned above, eventually, the CLEAR sections in this document will cease to be relevant.

The intended audience for this SDD is the development team, and any other persons/roles with an interest in the CL-V project.

1.2. Identification

The design described in this document pertains to the Enrollment System Core (ESC) application for ES 4.2 release. It is a part of CL 1.0 & 2.0.

1.3. Scope

Table 1: Scope Inclusions

Enrollment System 4.2 Includes
Changes to ES User Interface <ul style="list-style-type: none">• Modify ES UI Military Service and Update Eligibility pages:• Manage identification/manipulation of Veterans eligible for CL-V care.<ul style="list-style-type: none">– Implement a field to hold CL information:<ul style="list-style-type: none">➢ ADD<ul style="list-style-type: none">■ HEC user will be able to enter CL indicator by selecting from options yes/no based on

Enrollment System 4.2 Includes

specified business rules. Default is null (blank). Once the indicator changes from null to yes or no, its value can never change back to null. Additional fields are CL Verified Method and Comments.

- EDIT
 - HEC user will be able to enter CL indicator by selecting from options yes/no based on specified business rules. Default is null (blank). Once the indicator changes from null to yes or no, its value can never change back to null.
- VIEW
 - HEC user will be able to view the CL indicator.
 - When the CL indicator is set, the additional fields including the Date and Time Stamp, Change Site, Source of Change, and method of verification will be displayed.
- ES Eligibility View and Overview pages will be modified:
 - Display CL Eligibility Factor Code as confirmation for CL status

Impacted System(s): ESC

Database changes

- Modify ADR database to support collection and storage of the CL data.
- Modify ADR database to maintain the CL data change history.
- Modify SDS database to add all required CL fields to support standardized data entry.

Impacted System(s): ADR database

Data upload from CLEAR

- Create a new batch program to upload and process data from CLEAR.
- Create batch process summary reports to provide statistics on:
 - Summary of records processed – number of records successfully processed, number of records that failed and reason for failure.

Detail on CL assignment for each Veteran record – CL status assigned/declined, “old” priority group and “new” priority group.

Impacted System(s): ESC

Business Rules

- Create new ILOG rules based on business specification:
 - Allow setting a person’s CL indicator only when the person’s Military Service Episode (MSE) data meets required conditions.
 - When changes to military service data occurs, re-evaluate the impact on CL status.
 - Process CL data and determine eligibility factor for CL.

Calculate eligibility based on CL status, and calculate enhanced enrollment priority group based on eligibility.

Impacted System(s): ESC

Enrollment System 4.2 Includes
<p>Communication with Systems Of Interest</p> <ul style="list-style-type: none"> • Modify Z07 and Z11 to include CL information. • Modify EE web service and VOA web service to include CL information: <ul style="list-style-type: none"> – CL information would be added to the EE xml payload to be viewed and retrieved by permitted requestors. • Modify OPP process to include the CL information: <ul style="list-style-type: none"> – Add CL information to the OPP stored procedure. – Modify the existing OPP Batch Job to include the CL data and added to the Total Eligibility Factors Summary Report file <p>Modify reports to provide statistics on CL eligible Veterans</p> <p>Impacted System(s): ESC, VistA, HL7</p>
<p>Security Services</p> <p>CL-V will not be performing any security services. However, ESC Release 4.2, of which, CL-V is a part, is being deployed with several security fixes. These security fixes are a part of another project in ESC Release 4.2.</p> <p>Impacted System: ESC, VistA, E&E Web service, ADR</p>
<p>Online Help</p> <p>The online help will be discussed later. We have not discussed what the security services entail.</p> <p>Impacted System: ESC</p>
<p>Handbook and VCG</p> <ul style="list-style-type: none"> • Confirmed changes to the CL status would invoke the ES trigger logic for sending a handbook insert with the new priority group assignment. <p>Impacted System: VBH</p>

Table 2: Scope Exclusion

Excludes
N/A

1.4. Constraining Policies, Directives and Procedures

Listed below are specific directives and requirements for CL-V:

VA Directives:

- VA Directive 6210, “Automated Information Systems (AIS) Security Procedures”
- VA Directive 6214, “Information Technology Security Certification and Accreditation”

VA Requirement:

- Public Law 112-154.

1.5. User Characteristics

The ESC users will primarily be Legal Administrative Specialists (LAS) or other similar users who will enter as well as view Veteran eligibility information.

1.6. Relationship to Other Documents and Plans

This SDD is derived from the PWS and the Requirements Specification Document (RSD).

EHBD_Enrollment_System_Core_SDD_Inc.docx

P01-PWS Camp Lejeune Veteran Support Restart.docx

CL-V RSD.docx

1.7. Definitions, Acronyms, and Abbreviations

Common VA acronyms:

[VA Acronym Lookup](#)

Table 3: Other Acronyms

Acronym	Definition
ADR	Administrative Data Repository
AITC	Austin Information Technology Center
CCR	Code Change Request
CL	Camp Lejeune
CL-V	Camp Lejeune-Veterans
CM	Clinical Modification (or Configuration Management)
CPT	Current Procedural Terminology
CR	Change Request
CLEAR	Camp Lejeune Environmental Action Report
ECE	Enrollment Customer Enhancements
EE	Enrollment Eligibility
ESC	Enrollment System Core (web-based application used by Health Eligibility Center staff)
ESE	Enrollment System Enhancements
HEC	Health Eligibility Center
HL7	Health Level 7
ICD	Interface Control Document
ICD-9	International Classification of Diseases, version 9
ICD-10	International Classification of Diseases, version 10

Acronym	Definition
IRS	Internal Revenue Service
JDBC	Java Database Connectivity
LAS	Legal Administrative Specialist
OPP	Office of Policy and Planning
MSE	Military Service Episode
PWS	Performance Work Statement
REE	Registration, Eligibility, and Enrollment
RSD	Requirements Specification Document
SDD	System Design Document
SDS	Standard Data Service
UI	User Interface
VBH	Veterans Benefit Handbook
VCG	Virtual Content Generator
VIE	VistA Interface Engine
VistA	Veterans Health Information Systems and Technology Architecture
VOA	Veterans Online Application *

1.8. References

ES 4.2 Release Notes

[CL-V RSD](#)

[Service Descriptions document](#)

[Enrollment System Core SDD](#)

[P01-PWS Camp Lejeune Veteran Support Restart](#)*

*Access to this document is restricted to authorized personnel

2. Background

2.1. Overview of the System

Enterprise Enrollment System (EES) is a collection of systems and services that helps automate the VHA operational activities related to healthcare eligibility and enrollment determination including income verification for VA's health benefits that are tied to financial needs assessments. A discussion of all of EES's systems and services is beyond the scope of this SDD. Below is a high level diagram showing the various EES components. A detailed coverage of EES is described in the document [Enrollment System Core SDD](#).

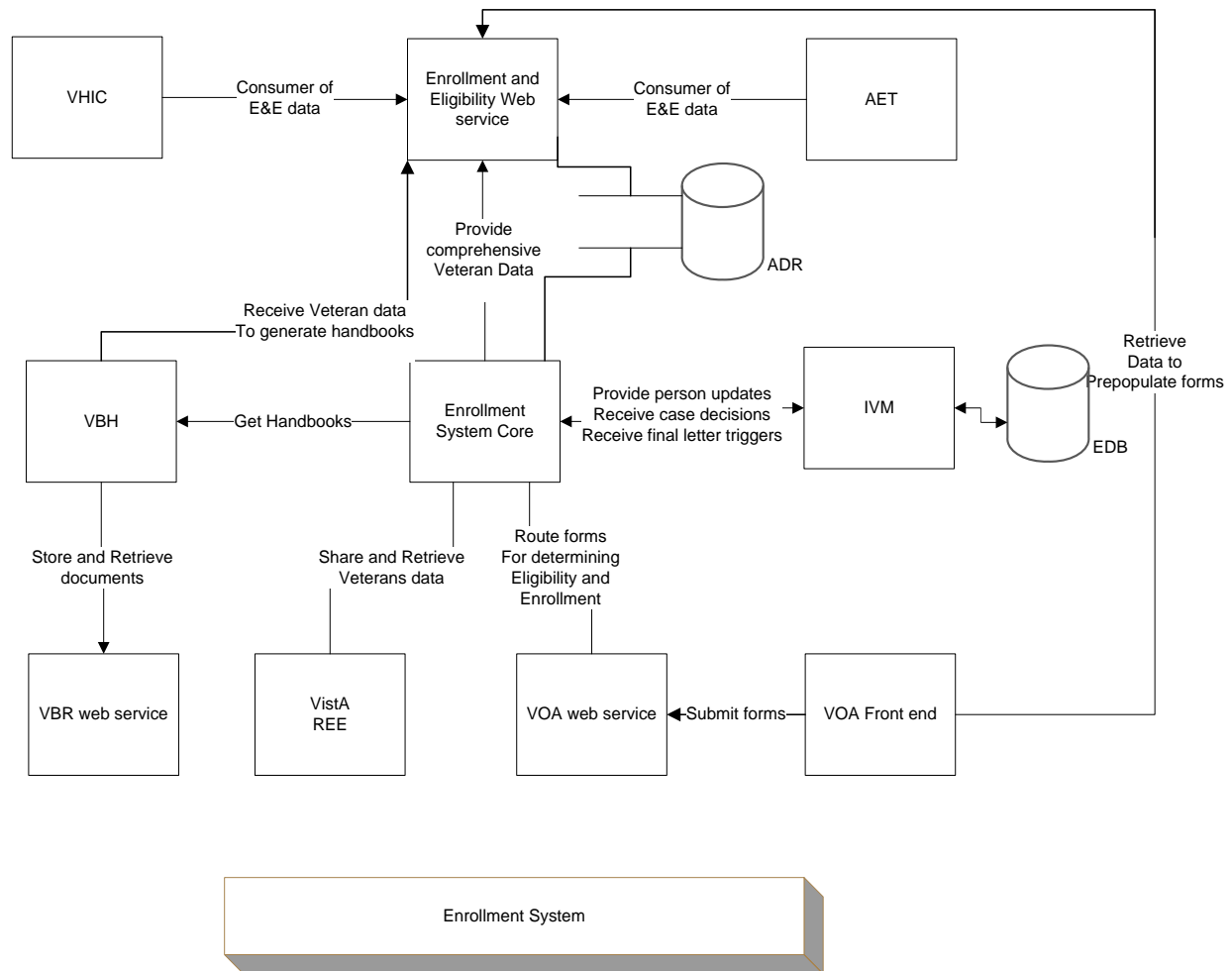


Figure 1: Overview of Enterprise Enrollment System

For CL-V, the systems and components of ES that will be affected are:

- **Enrollment System Core (ESC):** It is an enterprise level web application that Health Eligibility Center (HEC) users use to track and manage Veteran healthcare enrollment process. ESC enables the tracking and management of Veteran healthcare enrollment and eligibility information.

- **Administrative Data Repository (ADR):** It is the database utilized by ESC for storage/retrieval of data for Veterans.
- **VistA REE:** This is a MUMPS application that will require enhancements to incorporate CL-V registration, eligibility and enrollment.
- **HL7 messaging:** ESC communicates with the VistA REE applications via HL7 messaging.
- **VOA Web Service:** This is a web service interface that provides capabilities to store and retrieve documents from a common repository.
- **VOA Front End:** This is a front end user interface used by veterans to access the enrollment system on line.
- **E&E Web Service:** This is a web service for Eligibility & Enrollment.

Note that for CL-V, all changes to ES are directly linked to changes in ESC. The context diagram below shows interactions of external actors (systems or people) with the ESC system. This diagram only depicts interactions that are relevant to the ES 4.2 project. Please refer to the [Enrollment System Core SDD](#) for the complete system context diagram.

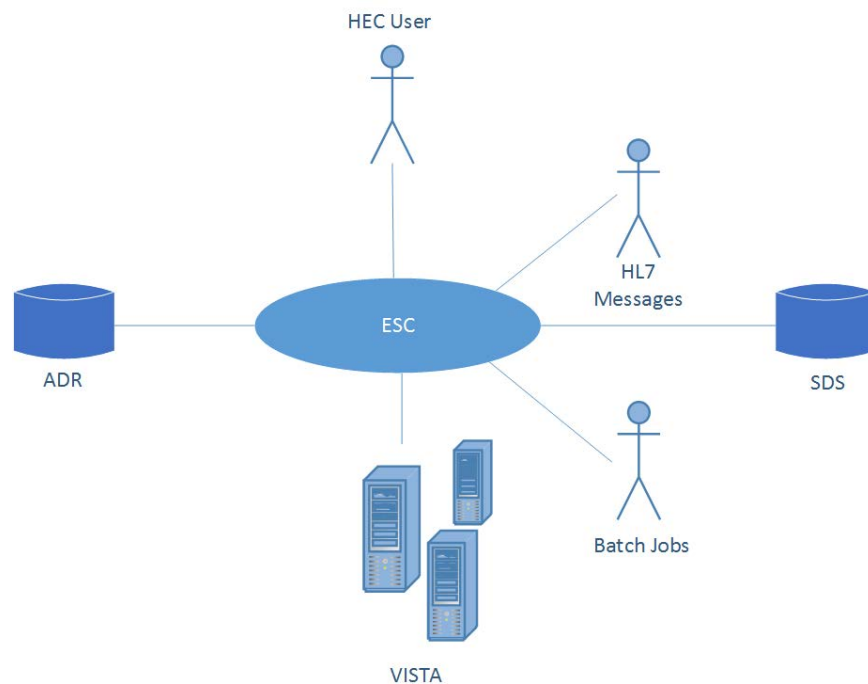


Figure 2: Overview of Enrollment System Core as applicable to CL-V

The reasons for the CL-V enhancements and the subsequent benefits have already been explained in the introductory section. As far as CL-V is concerned, the **Batch Jobs** shown above are the CLEAR data feeds.

2.2. Overview of the Business Process

For the business rules, please refer to the document [Camp Lejeune P.L. 112-154 Veterans Systems Changes Business Requirements Document \(BRD\) v10](#). The business process described below is derived from the contents of that document.

- Provide treatment to Veterans only (treatment for family members cannot be provided until Congress has approved funds for family care and regulations are subsequently published).
- Process CL-V with adherence to Enterprise Requirements Repository (ERR) as defined in the BRD Appendix D.
- Both ES and VistA users need the capability to process Veterans eligible for care based on Camp Lejeune legislation.
- Both ES and VistA users need the capability to determine registration, enrollment & eligibility of Veterans for Camp Lejeune benefits.
- The application must share information and business decisions with other VHA processes.
- The application regularly obtains data feeds from the CLEAR data feed.
- Provide help text for all the CL-V fields in both ES and VistA.

Table 4: Business Process

Business Process ID	Business Process Name	Type	Owner	Description
N/A				

2.3. Business Benefits

This software enhancement will allow proper identification of Camp Lejeune eligible Veterans to receive no-cost hospital care and medical services from the VA for Camp Lejeune related illnesses and conditions. In doing so, the software plays a key role in ensuring that no procedural roadblocks inhibit medical services for any of the 15 conditions.

The software will ensure that Veterans have access to accurate and consistent information on Camp Lejeune qualified benefits and services through one portal from which, VA can quickly and smoothly resolve a Veteran's Camp Lejeune issues.

The software also will be key to quickly and efficiently rejecting false Camp Lejeune eligibility claims.

2.4. Assumptions and Constraints

None.

2.4.1. Design Assumptions

None.

2.4.2. Design Constraints

None.

2.4.3. Design Trade-offs

None.

2.5. Overview of the Significant Requirements

2.5.1. Overview of Significant Functional Requirements

Table 5: Functional Requirements

ID	Requirement
ESC Changes	
RSD 2.6.1	Enrollment System Changes
RSD 2.6.2	Ability to view Camp Lejeune Indicator
RSD 2.6.3	Modify ES to Change the CLE Indicator for Identified Instances
RSD 2.6.4	Maintain History of Camp Lejeune Information
RSD 2.6.5	Trigger Messaging to VistA Sites of Record
RSD 2.6.6	Receive Camp Lejeune Information from VistA
RSD 2.6.7	Processing Camp Lejeune Information from VistA
RSD 2.6.8	Entering Camp Lejeune Information in ES Add a Person
RSD 2.6.9	Process Camp Lejeune Information from VOA
RSD 2.6.10	E&E Processing for Camp Lejeune Eligible Veterans
RSD 2.6.11	Incorporate Camp Lejeune Information into the E&E Web Service
RSD 2.6.12	Incorporate the Camp Lejeune Information into the OPP Extract
RSD 2.6.13	Reports – Add Camp Lejeune Information to ES Reports
RSD 2.6.15	Load Camp Lejeune Information from an External Source Listing

2.5.2. Overview of Functional Workload / Performance Requirements

Table 6: Workload and Performance Requirements

ID	Requirement
N/A	N/A

2.5.3. Overview of Operational Requirements

Table 7: Operational Requirements

ID	Requirement
N/A	N/A

2.5.4. Overview of the Technical Requirements

For the most part, the ES application's software architecture and infrastructure are in compliance with VA Technical reference model and Enterprise Infrastructure Engineering Team's standards. The Camp Lejeune eligibility requirement, however, brought a few new technical requirements as listed in the table below.

Table 8: Operational Requirements

ID	Requirement
1	ES requires a method of processing the incoming data feed from CLEAR.
2	HL-7 message enhancements are required for ESC and VistA REE to communicate with each other.
3	Additional fields required for web service messages in the EE Web Service (to support VOA and other consumers of the service).

2.5.5. Overview of the Security or Privacy Requirements

Table 9: Security Requirements

ID	Requirement
N/A	N/A

2.5.6. Overview of System Criticality and High Availability Requirements

N/A

2.5.7. Single Sign-on Requirement

N/A

2.5.8. Requirement for Use of Enterprise Portals

N/A

2.5.9. Special Device Requirements

N/A

2.6. Legacy System Retirement

N/A

Table 10: Proposed Legacy Retirements

Legacy System or Legacy System Component	System Retired or Workload Reduced	Quantify the Workload Reduction
N/A		

3. Conceptual Design

3.1. Conceptual Application Design

3.1.1. Application Context

The context diagram below shows the application context of the components related to this specific release. For the complete ES application context please refer to the [Enrollment System Core SDD](#).

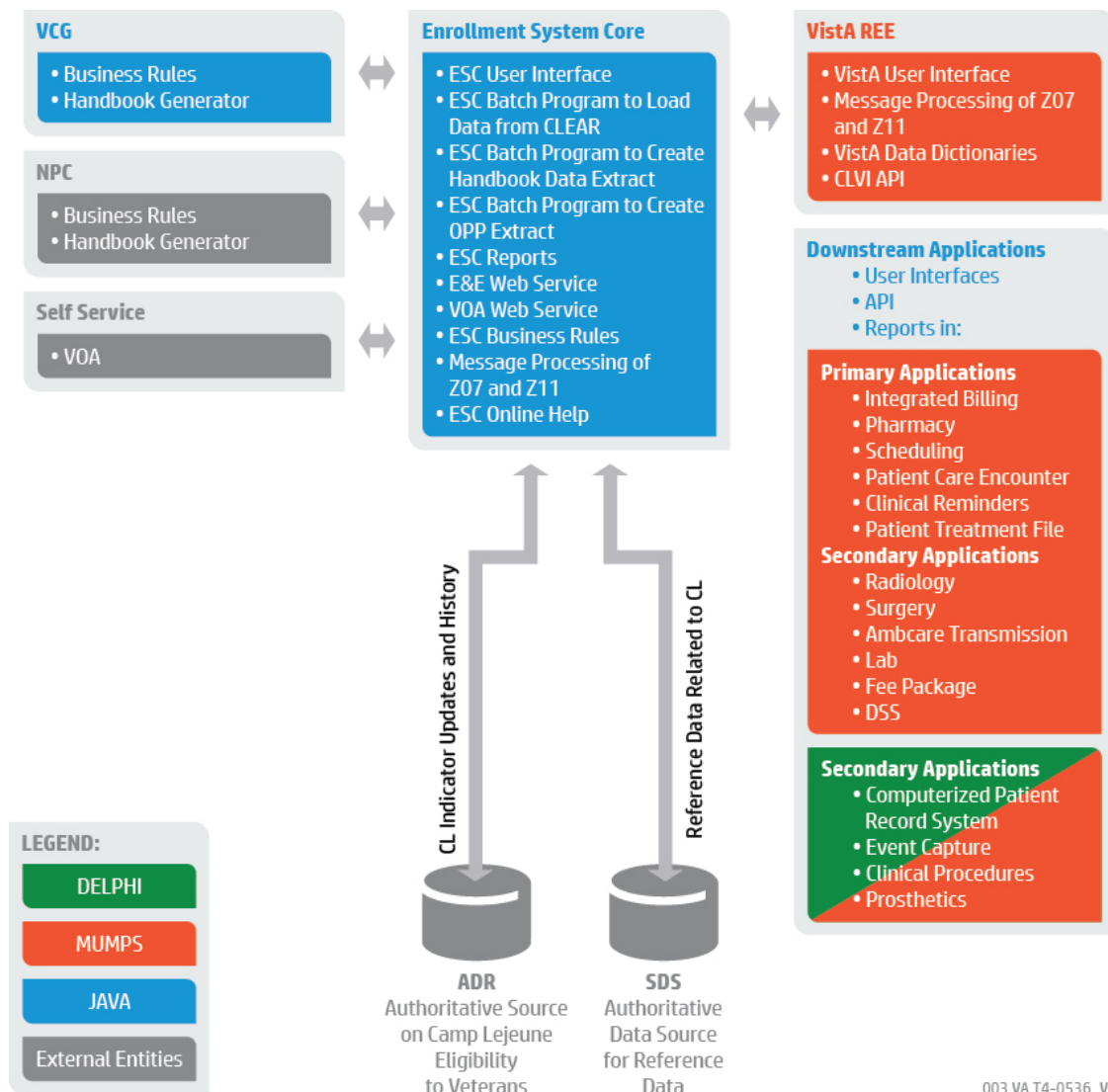


Figure 3: Camp Lejeune Context Diagram – ESC

3.1.2. High-Level Application Design

The High-Level Application Design can be referenced in the document [Enrollment System Core SDD](#).

3.1.3. Application Locations

ES 4.2 is a release that resides on the existing ESC/Vista application and infrastructure. No change in this area is introduced. For details on all locations, refer to the document [Enrollment System Core SDD](#).

3.2. Conceptual Data Design

Administrative Data Repository is the backend database for ESC for storing all the transaction data. ADR also stores the reference data that is applicable for only ESC. For the detailed database design, please refer to the following ADR documentation:

- [ADR Data Dictionary FY15-Q2 \(2015-2-18\).xlsx](#)
- [ADR Entity Relationship Diagrams FY15-Q2 \(2015-2-18\).zip](#)

The ADR System Design Document is pending release to TSPR. ESC uses Standard Data systems (SDS), an enterprise-level data source for all enterprise-level reference data that is used by more than one system.

3.2.1. Project Conceptual Data Model

For CL-V enhancements, the current ADR database will be enhanced to meet the additional requirements.

3.2.2. Database Information

Note that some CL-V changes/enhancements were made to the database as part of Release 4.1. This document covers database changes/enhancements only for CL-V Release 4.2. It is recommended that the reader refers to the respective section of the SDD for Release 4.1.

Tables that have been dropped:

- ADR.CAMP_LEJEUNE_VERIFCATION,
- ADR.CAMP_LEJEUNE_VERIFCATION_H
- ADRREF.STD_CLCHANGESITELIST
- ADRREF.STD_CLCHANGESITELISTHISTORY

Views that have been dropped:

- EEUSR.CL_CHANGE_SITE_LIST
- Add columns to ADR.SPECIAL_FACTOR and ADR.SPECIAL_FACTOR_H:

Column Name	Value
CL_CHANGE_SITE	NUMBER(20) Primary Key NOT NULL
CL_COMMENT	VARCHAR2(255) BYTE
CL_SOURCE_OF_CHANGE	NUMBER(20) FK references ADRREF.STD_CLSOURCEOFCHANGE

New table ADR.CL_VERIFICATION_METHOD

Column Name	Value
CL_VERIFICATION_METHOD_ID	NUMBER(20) Primary key NOT NULL
SPECIAL_FACTOR_ID	NUMBER(20) NOT NULL FOREIGN KEY references ADR.SPECIAL_FACTOR.SPECIAL_FACTOR_ID
CL_VERIFICATION_METHOD_CODE	NUMBER(20) NOT NULL FOREIGN KEY references ADRREF.STD_CLVERIFICATIONTYPE_ID
RECORD_CREATED_BY	VARCHAR2(30) NOT NULL
RECORD_CREATED_DATE	DATE NOT NULL
RECORD_MODIFIED_BY	VARCHAR2(30) NOT NULL
RECORD_MODIFIED_DATE	DATE NOT NULL
RECORD_MODIFIED_COUNT	NUMBER(10) NOT NULL

New table ADR.CL_VERIFICATION_METHOD_H

Column Name	Value
CL_VERIFICATION_METHOD_ID	NUMBER(20) NOT NULL
SPECIAL_FACTOR_ID	NUMBER(20) NOT NULL FOREIGN KEY references ADR.SPECIAL_FACTOR.SPECIAL_FACTOR_ID
CL_VERIFICATION_METHOD_CODE	NUMBER(20) NOT NULL FOREIGN KEY references ADRREF.STD_CLVERIFICATIONTYPE_ID
RECORD_CREATED_BY	VARCHAR2(30) NOT NULL
RECORD_CREATED_DATE	DATE NOT NULL
RECORD_MODIFIED_BY	VARCHAR2(30) NOT NULL
RECORD_MODIFIED_DATE	DATE NOT NULL
RECORD_MODIFIED_COUNT	NUMBER(10) NOT NULL
CL_VERIFICATION_METHOD_ID_H	Number(20) NOT NULL PRIMARY KEY
TRANSACTION_TYPE_CODE	Varchar2(1) NOT NULL

3.2.3. User Interface Data Mapping

ESC will undergo changes to their User Interface. They are described below.

3.2.3.1. Application Screen Interface

3.2.3.1.1. Current Military Service

The screenshot displays the 'Current Military Service' section of a web application. At the top, a navigation bar includes tabs for Overview, Eligibility, Demographics, Military Service (selected), Financials, Enrollment, Facility, and Communications. Below the navigation bar, a 'SEND QUERY TO PROGS BACKEND' button is visible. A message 'No Data Available' is shown in a light orange box. The main content area is titled 'Current Military Service' and includes a 'VIEW HISTORICAL MILITARY SERVICE' link. A note states 'Required fields are indicated with an asterisk/star'. The form contains several fields with radio buttons and dropdown menus: 'Discharge Due to Disability' (Yes, No, Unknown), 'Military Disability Retirement' (Yes, No, Unknown), 'Agent Orange Exposure Location' (Not Exposed, APPLY), 'Radiation Exposure Method' (Not Exposed, APPLY), 'SW Asia Conditions' (Yes, No), 'Medal Of Honor Indicator' (Yes, No, No Data), 'SHAD' (Yes, No), 'Camp Lejeune Eligibility' (Yes, No), 'Verified Methods' (CDC, DPRIS, DoD, NPHC, OMPF, OTHER, USMC), 'Comments' (text area), 'CL Date Registered' (01/27/2015), 'CL Eligibility Change Site' (HEALTH ELIGIBILITY CENTER), 'CL Eligibility Source of Change' (SSOAnonymous), 'Filipino Veteran Proof' (- Select -), 'Combat Veteran Eligibility End Date', 'Eligible for Class II Dental' (Yes, No), and 'Class II Dental Application Due Before:'. At the bottom, there is a section for 'OEF/OIF Combat Episodes' with an 'ADD OEF/OIF COMBAT EPISODE' button and a 'No Data Available' message.

Figure 4: Camp Lejeune Information Expanded

Overview
Eligibility
Demographics
Military Service
Financials
Enrollment
Facility
Communications

SEND QUERY TO MSDS BROKER

VA CONNECTICUT HEALTHCARE SYSTEM - WEST HAVEN DIVISION (689)

Current Military Service

VIEW HISTORICAL MILITARY SERVICE

Discharge Due to Disability:
☐ Yes
☐ No
☒ Unknown

Military Disability Retirement:
☐ Yes
☐ No
☒ Unknown

Agent Orange Exposure Location:
Not Exposed

Radiation Exposure Method:
Not Exposed

SW Asia Conditions:
☐ Yes
☐ No

Medal Of Honor Indicator:
☒ Yes
☐ No
☐ No Data

Document Type:
- Select -

Document Receipt Date:
11/03/2014
(mm/dd/yyyy)

Source of Change:
- Select -

Decoration Status:

Status Update Date:

SHAD:
☐ Yes
☐ No

Camp Lejeune Eligibility:
☐ Yes
☐ No

Filipino Veteran Proof:
- Select -

Combat Veteran Eligibility End Date:

Eligible for Class II Dental:
☐ Yes
☐ No

Class II Dental Application Due Before:

OEF/OIF Combat Episodes
ADD OEF/OIF COMBAT EPISODE

No Data Available

Figure 5: Camp Lejeune Information Collapsed

3.2.3.1.2. Update Eligibility

Previous Next Options

Other Eligibility Factors

Discharge Due to Disability: ☒ Yes ☐ No ☐ No Data

Military Disability Retirement: ☐ Yes ☐ No ☒ No Data

Agent Orange Exposure Location: Not Exposed

Radiation Exposure Method: Not Exposed

SW Asia Conditions: ☐ Yes ☒ No

Spinal Cord Injury: NOT APPLICABLE

Nose and Throat Radium Treatments: ☐ Yes ☐ No ☒ Unknown

Camp Lejeune Eligibility: ☒ Yes ☐ No

Verified Methods:

- ☒ CDC
- ☐ DPRIS
- ☐ DoD
- ☐ NPRC
- ☐ OMPF
- ☐ OTHER
- ☐ USMC

Comments:

CL Date Registered: 01/27/2015 (mm/dd/yyyy)

CL Eligibility Change Site: HEALTH ELIGIBILITY CENTER

CL Eligibility Source of Change: SSOAnonymous

[Non-Veteran Eligibility Codes](#)

Figure 6: Update Eligibility

3.2.3.1.3. View Eligibility

Rated SC Disabilities		
No Data Available		
Prisoner of War		VIEW HISTORICAL PRISONER OF WAR
No Data Available		
Health Benefit Plans		
Current Number of Health Benefit Plans: 0		
Secondary Eligibility Codes		
No Data Available		
Other Eligibility Factors		VIEW CLINICAL DETERMINATION
Camp Lejeune	SW Asia Conditions	SHAD
Radiation Exposure		
Other Ineligibility		
No Data Available		
Financial Assessment		
No Current Income Test Data Available		

Figure 7: View Eligibility

3.2.3.1.3 View Camp Lejeune Indicator History

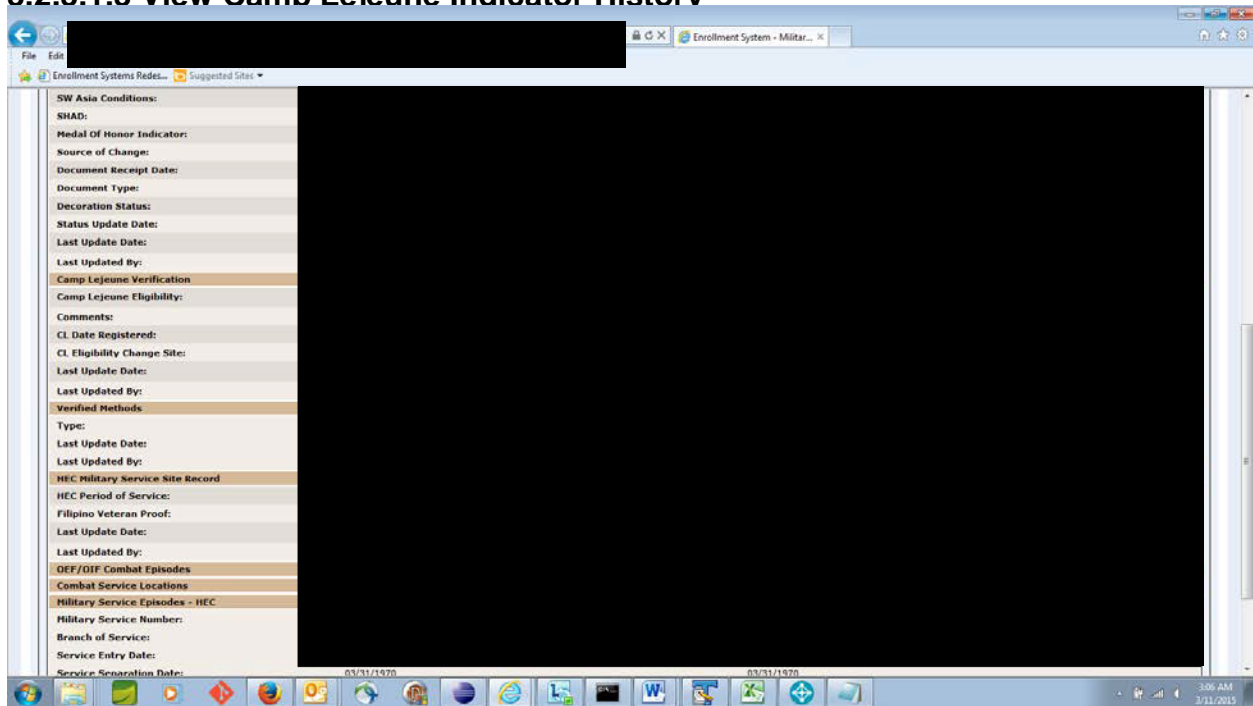


Figure 8: History of Military Service

3.2.3.1.4. Add a Person

No Data Available

Current Military Service [VIEW HISTORICAL MILITARY SERVICE](#)

Required fields are indicated with an asterisk/star *

Discharge Due to Disability: ☐ Yes ☐ No ☒ Unknown

Military Disability Retirement: ☐ Yes ☐ No ☒ Unknown

Agent Orange Exposure Location:

Radiation Exposure Method:

SW Asia Conditions: ☐ Yes ☐ No

Medal Of Honor Indicator: ☐ Yes ☐ No ☒ No Data

SHAD: ☐ Yes ☐ No

Camp Lejeune Eligibility: ☒ Yes ☐ No

Verified Methods:

- ☐ CDC
- ☐ DPRIS
- ☐ DoD
- ☐ NPRC
- ☐ OMPF
- ☐ OTHER
- ☐ USMC

Comments:

Figure 9: Add a Person

3.2.3.2. Application Report Interface

3.2.3.2.1. Total Eligibility Factors Report

The Total Eligibility Factors Summary and Detail reports are modified to include the camp Lejeune special factor;

Total Eligibility Factors Summary Report	
From: 01/01/2015	To: 02/28/2015
Date / Time Run: 03/04/2015 10:01 AM	
<hr/>	
Camp Lejeune	3

Figure 10: Total Eligibility Factors Summary Report

Total Eligibility Factors Detail Report

As of: 03/31/2015

Date / Time Run: 03/04/2015 1:05 PM

VISN 10 - DAYTON, OH VAMC

Camp Lejeune	1
--------------	---

VISN 11 - JOHN D. DINGELL VA MEDICAL CENTER (553)

Camp Lejeune	5
--------------	---

VISN 19 - CHEYENNE VAMC

Camp Lejeune	3
--------------	---

Page 1 of 1

Figure 11: Total Eligibility Factors Detail Report

3.2.3.2.2. CLEAR Extract Reports

Two pipe-separated values reports are created automatically when the CLEAR extract process runs. The CLEAR Extract File Import Successful Report displays the following fields:

- ICN
- FirstName
- LastName
- SSN
- DOB
- Gender
- OldPriorityGroup
- NewPriorityGroup

The CLEAR Extract File Import Unsuccessful Report displays the following fields:

- ICN
- FirstName
- LastName
- SSN

- DOB
- Gender
- ErrorReason

3.2.3.3. Unmapped Data Element

N/A

3.3. Conceptual Infrastructure Design

There is no change in infrastructure for this release. Refer to the [Enrollment System Core SDD](#) for the target Infrastructure Design for this release.

3.3.1. System Criticality and High Availability

N/A for CL-V. This is specific to Release 4.2.

3.3.2. Special Technology

N/A for CL-V. This is specific to Release 4.2.

3.3.3. Technology Locations

N/A for CL-V. This is specific to Release 4.2.

3.3.4. Conceptual Infrastructure Diagram

N/A for CL-V. This is specific to Release 4.2.

3.3.4.1. Location of Environments and External Interfaces

N/A for CL-V. This is specific to Release 4.2.

3.3.4.2. Conceptual Production String Diagram

N/A for CL-V. This is specific to Release 4.2.

4. System Architecture

There is no change in the System Architecture for this release. Please refer to the [Enrollment System Core SDD](#) for the system architecture details.

4.1. Hardware Architecture

There are no changes in the Hardware Architecture for this release. Please refer to the [Enrollment System Core SDD](#) for the hardware architecture details.

4.2. Software Architecture

There are no changes in the Software Architecture for this release. Please refer to the [Enrollment System Core SDD](#) for the software architecture details.

4.3. Network Architecture

There are no changes in the Network Architecture for this release. Please refer to the [Enrollment System Core SDD](#) for the network architecture details.

4.4. Service Oriented Architecture / ESS

There are no changes in the Service Oriented Architecture for this release. Please refer to the [Enrollment System Core SDD](#) for the service oriented architecture details.

4.5. Enterprise Architecture

There are no changes in the Enterprise Architecture for this release. Please refer to the [Enrollment System Core SDD](#) for the enterprise architecture details.

5. Data Design

ADR is the backend database for ESC application. Please refer to the ADR documents referenced in Section 1.8 of the [Enrollment System Core SDD](#). The same contents apply equally to CL-V.

5.1. DBMS Files

CL-V does not require any special DBMS files. For DBMS files applicable to ESC in general, please refer to the [ADR requirements document](#).

5.2. Non-DBMS Files

The CLEAR extract is a text based flat file consisting of a single header row followed by several rows of data. The rows are all line separated and the elements are all pipe (“|”) separated. Here is the list of elements in each row of the flat file.

- ClearID
- PersonID
- Last_Name
- First_Name
- Middle_Name
- SSN
- Service_Number
- DOB
- Gender
- Address
- City
- State
- Zipcode
- Primary_Phone
- Secondary_Phone
- Email
- Registered_Date
- Residency_Verified
- Residency_Proof
- Vet_Branch_Of_Service
- Vet_Component

6. Detailed Design

The CL-V enhancement has very little architectural impact on the overall system as it has similarities to other features such as Agent Orange, SHAD, etc. The addition of tables specific to Camp Lejeune, by default, result in the addition of the respective Hibernate Entity classes.

6.1. Hardware Detailed Design

6.2. Software Detailed Design

6.2.1. Business Object Model

The following are the main business object classes added:

- **CampLejeuneVerification** – Represents the Special Factor data for Camp Lejeune. 1-to-1 relationship from the Special Factor. Attributes include changeSource, ChangeSite, internalCampLejeuneVerificationMethods, verificationType, comments, and changeDate_h.
- **CampLejeuneVerificationMethod** – represents verification methods assigned to the Camp Lejeune special factor. The CampLejeuneVerification special factor may contain 0-to-many CampLejeuneVerificationMethods. The significant classes are shown in the diagram below:

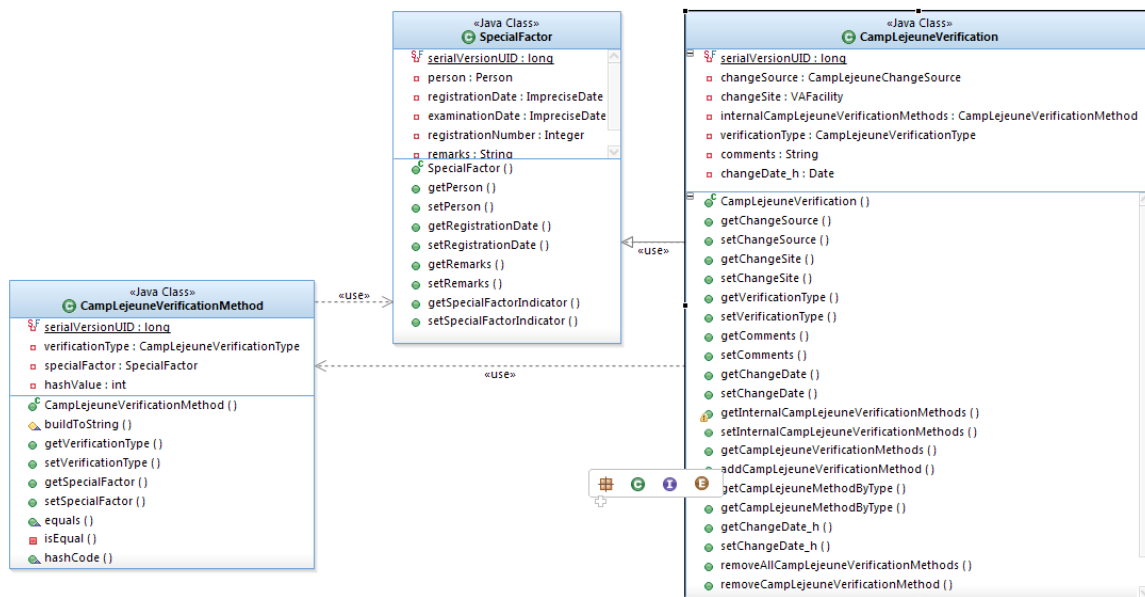


Figure 13: Camp Lejeune Class Diagram

6.2.2. Persistence Layer - Hibernate Mapping

The following files were modified or added in support of the hibernate mapping framework for persistence of Camp Lejeune data:

HECMS_common\config\shared\hibernate\gov\va\med\esr\common\model\ee\CampLejeuneVerification hbm xml - added

HECMS_common\config\shared\hibernate\gov\va\med\esr\common\model\ee\CampLejeuneVerification_H hbm xml - added

HECMS_common\config\shared\hibernate\gov\va\med\esr\common\model\ee\CampLejeuneVerificationMethod hbm.xml - added
 HECMS_common\config\shared\hibernate\gov\va\med\esr\common\model\ee\CampLejeuneVerificationMethod_H hbm xml - added
 HECMS_common\config\shared\hibernate\gov\va\med\esr\common\model\lookup\CampLejeuneChangeSource hbm.xml - added
 HECMS_common\config\shared\hibernate\gov\va\med\esr\common\model\lookup\CampLejeuneVerificationType.hbm xml - added
 HECMS_common\src\gov\va\med\esr\common\model\ee\CampLejeuneVerification.java - added
 HECMS_common\src\gov\va\med\esr\common\model\ee\CampLejeuneVerificationMethod.java - added
 HECMS_common\config\shared\spring\commons\hibernate.xml - updated
 HECMS_common\config\shared\spring\commons\lookup_daos.xml - updated
 HECMS_common\config\shared\spring\commons\business_services.xml - updated
 HECMS_common\src\gov\va\med\esr\common\model\ee\CampLejeuneVerification.java - added
 HECMS_common\src\gov\va\med\esr\common\model\ee\CampLejeuneVerificationMethod.java - added
 HECMS_common\src\gov\va\med\esr\service\impl\LookupServiceImpl.java - updated
 HECMS_common\config\shared\spring\commons\hibernate.xml - updated
 HECMS_common\config\shared\spring\commons\lookup_daos.xml - updated
 HECMS_common\config\shared\spring\commons\business_services.xml - updated
 HECMS_common\src\gov\va\med\esr\service\impl\LookupServiceImpl.java - updated
 HECMS_common\src\gov\va\med\esr\service\LookupService.java - updated
 HECMS_common\config\shared\spring\commons\hibernate.xml - updated
 HECMS_common\config\shared\spring\commons\lookup_daos.xml - updated
 HECMS_common\config\shared\spring\commons\business_services.xml - updated

6.2.3. Messaging – ZEL segment

For HL7 Messaging, Camp Lejeune data is added to the ZEL segment. Details of the Camp Lejeune data included in the ZEL segment are located in Section 3.1.4.27 – ZEL - VA Specific Patient Eligibility Segment of the ICD, found in Section 7.2, Interface Detailed Design.

Camp Lejeune information is sent to all sites of record via an HL7 message.

The following files were modified in support of HL7 messaging:

HECMS_common\config\shared\spring\commons\model_properties.xml - updated
 HECMS_common\config\shared\spring\commons\commons.xml - updated
 HECMS_messaging\src\gov\va\med\esr\messaging\builder\message\ZELBuilder.java - updated
 HECMS_hl7schema\web\edb\messaging\hl7\xsd\zSegments\ZEL.xsd - updated
 HECMS_framework\src\gov\va\med\fw\hl7\segment\ZEL.java - updated
 HECMS_common\src\gov\va\med\esr\common\builder\entity\CampLejeuneVerificationMetaData.java - added
 HECMS_common\src\gov\va\med\esr\common\builder\entity\metaData\CampLejeuneVerificationMetaDataFromZEL.java - added
 HECMS_common\src\gov\va\med\esr\common\builder\entity\SpecialFactorBuilder.java - updated
 HECMS_messaging\src\gov\va\med\esr\messaging\builder\message\AbstractZ11Builder.java - updated
 HECMS_messaging\src\gov\va\med\esr\messaging\parser\Z07Parser.java - updated
 HECMS_messaging\src\gov\va\med\esr\messaging\builder\message\AbstractZ11Builder.java - updated

Camp Lejeune functionality will be rolled out to the sites incrementally through the use of the system parameter **CL_VISTA_FULL_ROLLOUT**.

This system parameter allows selective control of Vista sites to receive Z11 with CL data. Selected sites chosen are listed as CSV. Values: "ALL" = All sites, "NONE" = No sites.

Value is set to "NONE" at Production Rollout (DO NOT include CL-V data in ZEL segment to any Vista destinations).

At IOC, it is replaced by CSV values consisting of selected sites. For example: "442,553,123" (include CL-V data in ZEL segments for only those Vista destinations identified for IOC).

After IOC, it permanently defaults to "ALL" (include CL-V data in ZEL segment for all Vista destinations).

6.2.4. CLEAR Extract

Camp Lejeune information is updated using existing data extracted from the Camp Lejeune Environmental Action Report (CLEAR) database. Significant CLEAR classes added in support of the extraction process are shown below:

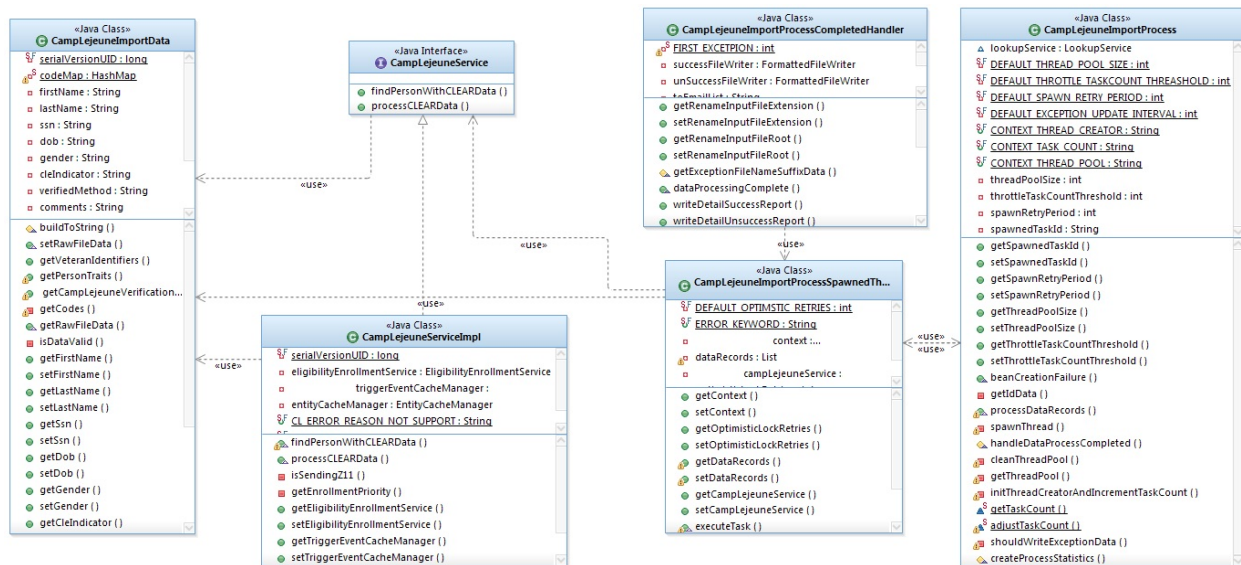


Figure 15: CLEAR Extract Class Diagram

The following files were added or modified to accomplish this task:

- HECMS_common\config\shared\env\deployenv.properties.template - updated
- HECMS_common\config\shared\ilog\DetermineEligibility.irl - updated
- HECMS_common\config\shared\ilog\ProcessSpecialFactors.irl - updated
- HECMS_common\config\shared\resources\RuleMessages.properties - updated
- HECMS_common\config\shared\spring\commons\business_services.xml - updated
- HECMS_common\config\shared\spring\commons\file_formats.xml - updated
- HECMS_common\config\shared\spring\commons\scheduling.xml - updated
- HECMS_common\src\gov\va\med\esr\common\batchprocess\CampLejeuneImportData.java - added
- HECMS_common\src\gov\va\med\esr\common\batchprocess\CampLejeuneImportProcess.java - added
- HECMS_common\src\gov\va\med\esr\common\batchprocess\CampLejeuneImportProcessCompletedHandler.java - added

HECMS_common\src\gov\va\med\esr\common\batchprocess\CampLejeuneImportProcessSpawnedThreadTask.java - added
 HECMS_common\src\gov\va\med\esr\common\model\ee\CampLejeuneVerification.java - updated
 HECMS_common\src\gov\va\med\esr\common\model\ee\CampLejeuneVerificationMethod.java - updated
 HECMS_common\src\gov\va\med\esr\common\model\lookup\ReportType.java - updated
 HECMS_common\src\gov\va\med\esr\common\model\lookup\StandardReport.java - updated
 HECMS_common\src\gov\va\med\esr\common\model\lookup\VAFacility.java - updated
 HECMS_common\src\gov\va\med\esr\common\rule\parameter\SpecialFactorInputParameter.java - updated
 HECMS_common\src\gov\va\med\esr\common\rule\service\impl\EligibilityEnrollmentRuleServiceImpl.java - updated
 HECMS_common\src\gov\va\med\esr\common\rule\service\impl\MergeRuleServiceImpl.java - updated
 HECMS_common\src\gov\va\med\esr\common\rule\service\impl\RuleValidationMessage.java - updated
 HECMS_common\src\gov\va\med\esr\common\rule\SpecialFactorInput.java - updated
 HECMS_common\src\gov\va\med\esr\service\CampLejeuneService.java - added
 HECMS_common\src\gov\va\med\esr\service\impl\CampLejeuneServiceImpl.java - added
 HECMS_common\src\gov\va\med\esr\service\impl\PersonServiceImpl.java - updated
 HECMS_common\src\gov\va\med\esr\service\impl\StandardReportServiceImpl.java - updated
 HECMS_common\src\gov\va\med\esr\service\impl\VOAApplicationServiceImpl.java - updated
 HECMS_framework\src\gov\va\med\fw\batchprocess\AbstractDataFileListenerProcess.java - updated
 HECMS_framework\src\gov\va\med\fw\batchprocess\CampLejeuneImportProcessStatistics.java - added
 HECMS_framework\src\gov\va\med\fw\service\CLEARImportSuccessErrorException.java - added
 HECMS_framework\src\gov\va\med\fw\service\CLEARImportSuccessErrorException.java - added
 HECMS_ilog\data\repository\edb\Application\DetermineEligibility\contents.xml - updated
 HECMS_ilog\data\repository\edb\Application\DetermineEligibility\DetermineEligibility\DetermineCampLejeune\contents.xml - added
 HECMS_ilog\data\repository\edb\Application\ProcessSpecialFactors - updated
 HECMS_ilog\data\repository\edb\Application\ProcessSpecialFactors\CampLejeune\contents.xml - updated
 HECMS_ilog\data\repository\edb\Application\ProcessSpecialFactors\contents.xml - updated
 HECMS_ilog\data\repository\edb\Application\Template Library\Business Object model\virtual\classes\parameter\specialfactor\contents.xml - updated
 HECMS_ilog\data\repository\edb\Application\Template Library\Business Object Model\virtual\domains\contents.xml - updated
 HECMS_libraries\build\env-per-release.xml - updated
 HECMS_libraries\build\init.xml - updated
 HECMS_voa\src\gov\va\med\esr\voa\webservice\builder\impl\EnrollmentDeterminationBuilderFactoryImpl.java - updated

6.2.5. OPP Extract

The Camp Lejeune Eligibility Indicator is appended to the OPP extract main file. This is accomplished by adding the Camp Lejeune indicator from the Special_Factor table to the main query in the following hibernate mapping file:

HECMS_common\config\shared\hibernate\gov\va\med\esr\common\batchprocess\batchprocesses_OPPEXtract hbm.xml - updated

Records with a Camp Lejeune Indicator will appear on the monthly output extract file RMTEsr.OPPEXT.D<DDYYMM>.txt file.

6.2.6. E&E Web Service

E&E Web Service supports requests for data or information regarding the enrollment or eligibility of Veterans on an as-needed basis. An Enrollment Web Service brokers requests from other systems to the ES, carrying out the system specific information request. The Camp Lejeune Eligibility Indicator is added as a special factor to be processed by Enrollment Determination.

The following files have been modified to support receipt of the Camp Lejeune Eligibility Indicator from the E&E Web Service:

HECMS_common\src\gov\va\med\esr\service\external\EnrollmentDeterminationFactoryimpl.java - updated
HECMS_common\src\gov\va\med\esr\service\external\person\SpecialFactorsInfo.java - updated
HECMS_lib\repository\gov\va\med\esr\ESRClient\4.2\ESRClient-4.2.jar – added (replace ESRClient-4.1.jar)
HECMS_websrv\build.xml - updated
HECMS_websrv\src\main\resources\schemas\eeSummary.xsd - updated

6.2.7. VOA Web Service

ES provides the web service interface for VOA UI to submit forms and retrieve the application status of the submitted forms. After ES receives the VOA form, ES processes the form through Enrollment and Eligibility business rules and uploads the data into the ES application. The Camp Lejeune indicator is now included in the Enrollment Determination Builder to enable receipt of Camp Lejeune as an additional Special Factor.

The following files have been modified in support of adding the Camp Lejeune Eligibility Indicator as a special factor received from VOA:

HECMS_common\config\shared\ilog\ProcessSpecialFactors.irl - updated
HECMS_common\config\shared\spring\commons\rule_services.xml - updated
HECMS_common\src\gov\va\med\esr\common\rule\parameter\SpecialFactorInputParameter.java - updated
HECMS_common\src\gov\va\med\esr\common\rule\SpecialFactorInput.java - updated
HECMS_ilog\data\repository\edb\Application\ProcessSpecialFactors\CampLejeune\contents.xmi
HECMS_ilog\data\repository\edb\Application\ProcessSpecialFactors\contents.xmi - updated
HECMS_ilog\data\repository\edb\Application\Template Library\Business Object Model\virtual\classes\parameter\specialfactor\contents.xmi - updated
HECMS_voa\src\gov\va\med\esr\voa\webservice\builder\impl\EnrollmentDeterminationBuilderFactoryImpl.java - updated

6.2.8. User Interface Layer

Two new screens are added to the ESC for Camp Lejeune Functionality. One screen provides access to Camp Lejeune information via the Military Service Screen, and the other provides access to Camp Lejeune Information via the Edit Eligibility Screen.

A subclass to HistoryDAOImpl.java, MilitaryServiceHistoryDAOImpl.java was created to manage the display for multiple selections of verified methods on the Military Service History screen. This subclass enables Hibernate to manually access the Camp Lejeune Verification special factor and its associated verification methods via the struts-actions.xml file..

The following files are included in the UI design:

HECMS_ui\config\shared\resources\CommonMessages.properties - updated
HECMS_ui\config\shared\resources\EEMessages.properties - updated

HECMS_ui\config\shared\resources\MilitaryServiceMessages.properties - updated
 HECMS_ui\config\shared\spring\ui\militaryservice\struts-actions.xml - updated
 HECMS_ui\config\shared\spring\ui\person\struts-actions.xml - updated
 HECMS_ui\config\shared\struts\ee\validation.xml - updated
 HECMS_ui\config\shared\struts\validator-rules.xml - updated
 HECMS_ui\src\gov\va\med\esr\ui\common\action\PersonHistoryAction.java - updated
 HECMS_ui\src\gov\va\med\esr\ui\common\beans\EnrollmentPriorityGroupAndSubGroup.java - updated
 HECMS_ui\src\gov\va\med\esr\ui\common\util\EdbStrutsValidator.java - updated
 HECMS_ui\src\gov\va\med\esr\ui\ee\action\EligibilityConversionService.java - updated
 HECMS_ui\src\gov\va\med\esr\ui\ee\action\EligibilityEditAction.java - updated
 HECMS_ui\src\gov\va\med\esr\ui\ee\action\EligibilityEditActionForm.java - updated
 HECMS_ui\src\gov\va\med\esr\ui\ee\action\EligibilityEnrollmentConversionService.java - updated
 HECMS_ui\src\gov\va\med\esr\ui\militaryservice\action\MilitaryServiceAction.java - updated
 HECMS_ui\src\gov\va\med\esr\ui\militaryservice\action\MilitaryServiceConstants.java - updated
 HECMS_ui\src\gov\va\med\esr\ui\militaryservice\action\MilitaryServiceConversionService.java - updated
 HECMS_ui\src\gov\va\med\esr\ui\militaryservice\action\MilitaryServiceInfoForm.java - updated
 HECMS_ui\src\gov\va\med\esr\ui\militaryservice\action\MilitaryServiceValidator.java - updated
 HECMS_ui\web\demographic\associationForm.jsp - updated
 HECMS_ui\web\ee\campLejeuneEligibility.jsp -added
 HECMS_ui\web\ee\eligibilityEditContent.jsp - updated
 HECMS_ui\web\militaryservice\campLejeune.jsp- added
 HECMS_ui\web\militaryservice\militaryServiceForm.jsp - updated
 HECMS_ui\web\militaryservice\militaryServiceOverview.jsp - updated

Figures of the web pages for Camp Lejeune are also included in Section 3.2.3.1, Application Screen Interface.

Current Military Service [VIEW HISTORICAL MILITARY SERVICE](#)

Required fields are indicated with an asterisk/star *

Discharge Due to Disability: ☐ Yes ☒ No ☐ Unknown

Military Disability Retirement: ☐ Yes ☒ No ☐ Unknown

Agent Orange Exposure Location: Not Exposed

Radiation Exposure Method: Not Exposed

SW Asia Conditions: ☐ Yes ☒ No

Medal Of Honor Indicator: ☒ Yes ☐ No ☐ No Data

Document Type: Other Official Service Records

Document Receipt Date: 02/04/2015 (mm/dd/yyyy)

Source of Change: VBA

Decoration Status: Confirmed

Status Update Date: 02/04/2015

SHAD: ☐ Yes ☒ No

Camp Lejeune Eligibility: ☒ Yes ☐ No

Verified Methods:

- ☐ CDC
- ☐ DPRIS
- ☐ DoD
- ☐ NPRC
- ☐ OMPF
- ☒ OTHER
- ☐ USMC

Comments: 13775

CL Date Registered: 03/18/2015 (mm/dd/yyyy)

CL Eligibility Change Site: HEALTH ELIGIBILITY CENTER

CL Eligibility Source of Change: VHAISOYANB

Figure 16: Update Current Camp Lejeune Information in Military Service screen

History Change Details (03/30/2015 9:25:57AM)			
Category	Old Value	New Value	Data Changed
Discharge Due to Disability:	No	No	
Military Disability Retirement:	No	No	
Combat Veteran Eligibility End Date:		09/23/2009	
Class II Dental Application Due Before:			
Eligible for Class II Dental:	No	No	
Agent Orange Exposure Location:			
Radiation Exposure Method:			
SW Asia Conditions:	No	No	
SHAD:			
Medal Of Honor Indicator:	Yes	Yes	
Source of Change:	VBA	VBA	
Document Receipt Date:	02/04/2015 12:00:00AM	02/04/2015 12:00:00AM	
Document Type:	Other Official Service Records	Other Official Service Records	
Decoration Status:	Confirmed	Confirmed	
Status Update Date:	02/04/2015 12:00:00AM	02/04/2015 12:00:00AM	
Last Update Date:	03/18/2015 8:48:43PM	03/20/2015 9:25:57AM	
Last Updated By:	Yan, Bin	Yan, Bin	
Camp Lejeune Verification			
Camp Lejeune Eligibility:	No	No	
Comments:	13775	13775	
CL Date Registered:	03/18/2015	03/18/2015	
CL Eligibility Change Site:	HEALTH ELIGIBILITY CENTER	HEALTH ELIGIBILITY CENTER	
CL Eligibility Source of Change:	CEV	CEV	
Last Update Date:	03/18/2015 8:48:43PM	03/18/2015 8:48:43PM	
Last Updated By:	Yan, Bin	Yan, Bin	
Verified Methods			
Type:	OTHER	OTHER	
Last Update Date:	03/18/2015 8:48:11PM	03/18/2015 8:48:11PM	
Last Updated By:	Yan, Bin	Yan, Bin	
HEC Military Service Site Record			

Figure 17: History screen of Camp Lejeune Information

Eligible For Medicaid: ☐ Yes ☒ No ☐ No Data

Date Medicaid Last Updated: 03/12/2015 10:35

Ineligible Date: (mm/dd/yyyy)

Other Eligibility Factors

Discharge Due to Disability: ☐ Yes ☒ No ☐ No Data

Military Disability Retirement: ☐ Yes ☒ No ☐ No Data

Agent Orange Exposure Location: Not Exposed

Radiation Exposure Method: Not Exposed

SW Asia Conditions: ☐ Yes ☒ No

Spinal Cord Injury: NOT APPLICABLE

Nose and Throat Radium Treatments: ☐ Yes ☒ No ☐ Unknown

Camp Lejeune Eligibility: ☒ Yes ☐ No

Verified Methods:

- ☐ CDC
- ☐ DPRIS
- ☐ DoD
- ☐ NPRC
- ☐ OHMF
- ☒ OTHER
- ☐ USMC

Comments: 13775

CL Date Registered: 03/18/2015 (mm/dd/yyyy)

CL Eligibility Change Site: HEALTH ELIGIBILITY CENTER

CL Eligibility Source of Change: VHA1SDYANIS

Non-Veteran Eligibility Codes

Figure 18: Camp Lejeune Information in Update Eligibility Screen

Effective Date of Combined Evaluation: 03/26/2015

Enrollment Effective Date: 03/26/2015

Eligibility Status: PENDING VERIFICATION

Annual Check Amount:

Eligibility Status Date: 01/21/2002

Eligibility Verification Method:

Eligibility Verification Source: CEV

VBA Query Status: VBA Data Manually Accepted

MSDS Query Status: Queried - No Data Received

Rated SC Disabilities: No Data Available

Prisoner of War: No Data Available [VIEW HISTORICAL PRISONER OF WAR](#)

Health Benefit Plans: Current Number of Health Benefit Plans: 0 [VIEW HEALTH BENEFIT PLANS](#)

Secondary Eligibility Codes: TRICARE

Other Eligibility Factors: Catastrophically Disabled [VIEW CLINICAL DETERMINATION](#)

Other Ineligibility: No Data Available

Financial Assessment 2014: Date Assessment Conducted: 03/12/2015, Facility Conducting Assessment: Means Test Status: No Longer Required

Figure 19: View Camp Lejeune Indicator in Eligibility screen

6.2.9. ILOG rules

Business rules affect many of the design elements detailed above and are maintained in the ILOG rules repository. The following ILOG rules have been added or modified in support of Camp Lejeune:

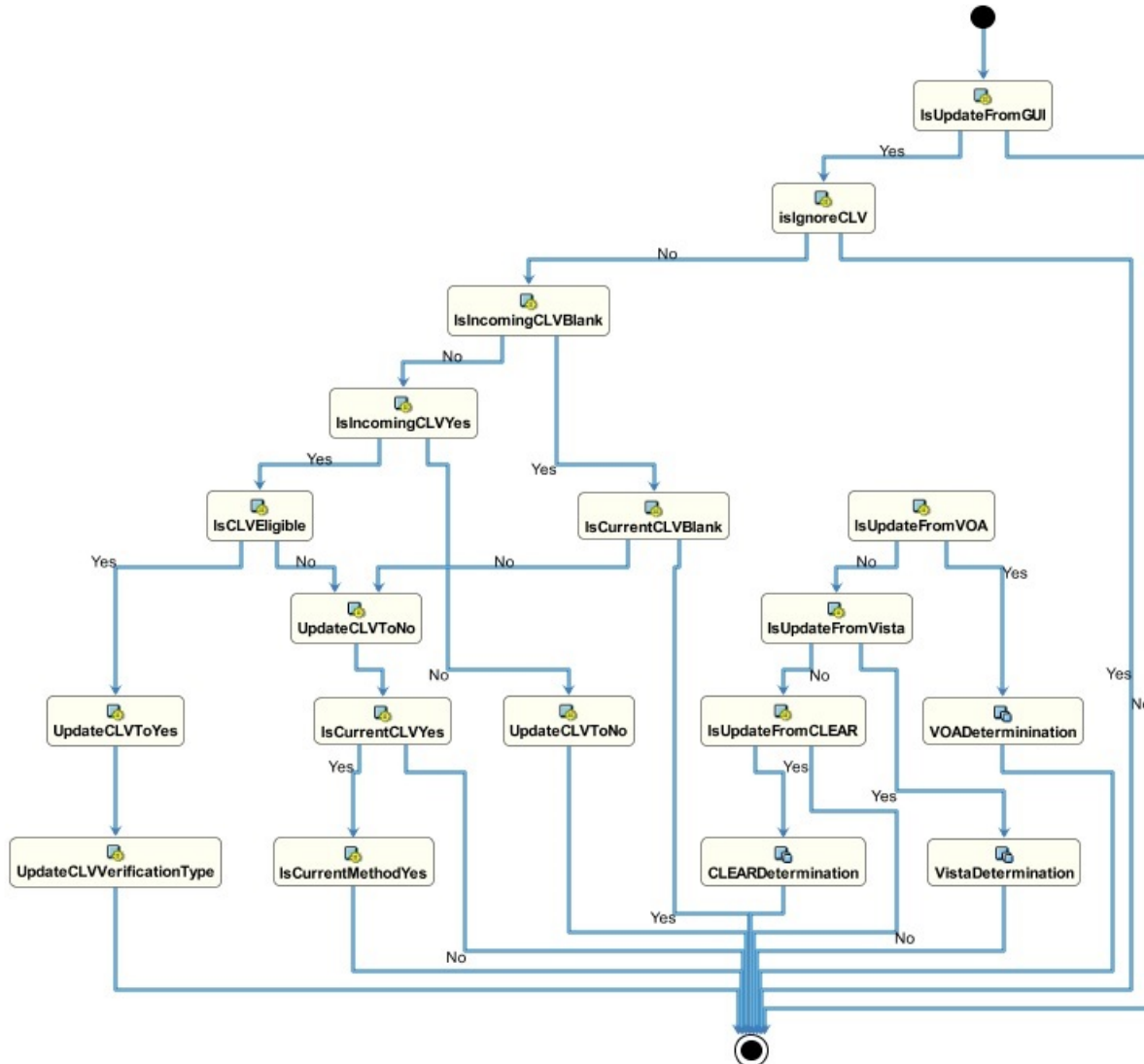


Figure 20: Determine Eligibility: DetermineCLV

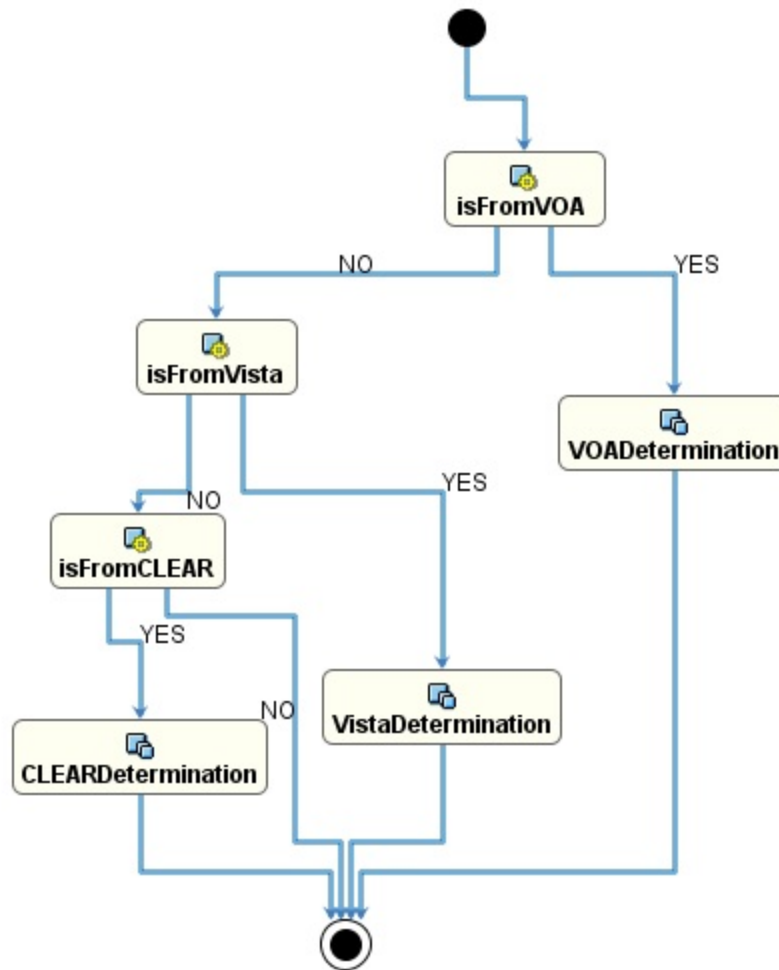


Figure 21: Process Special Factors: ProcessCampLejeune

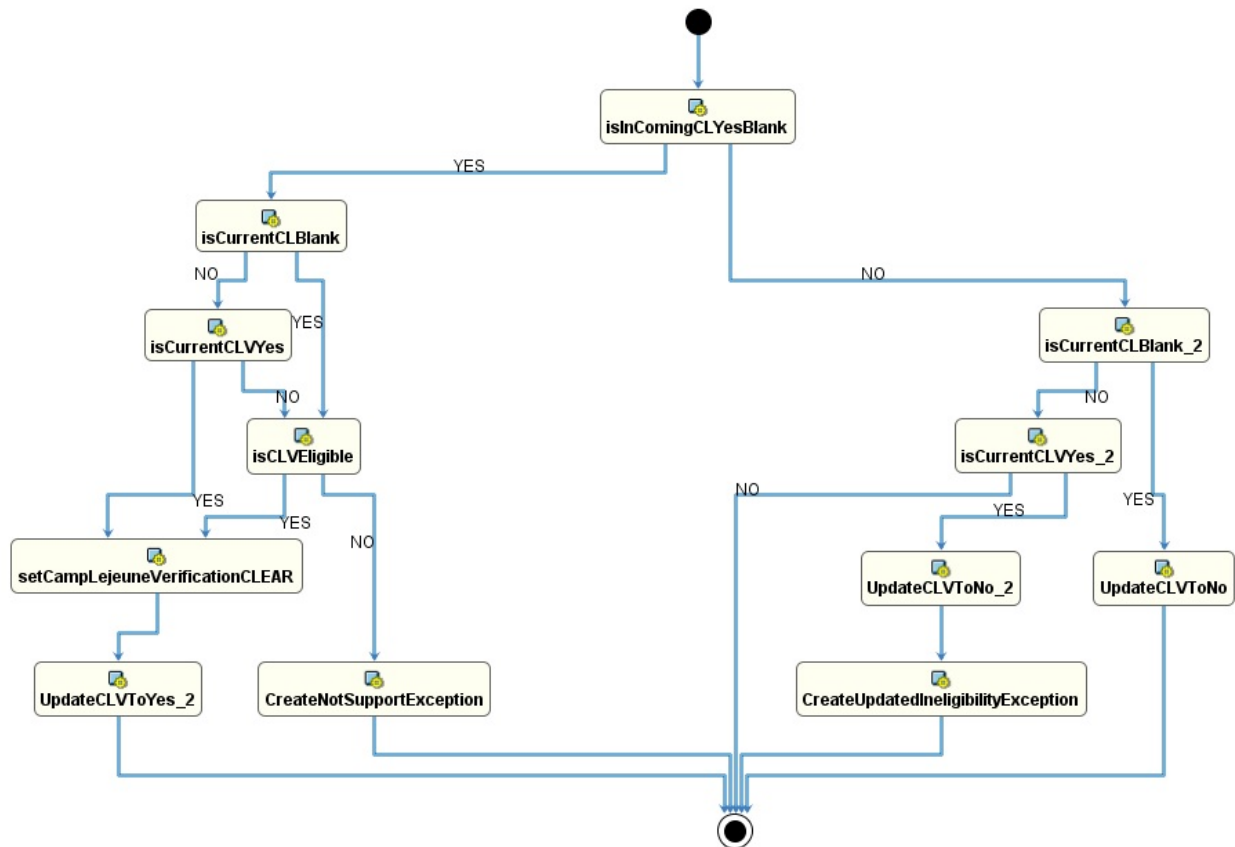


Figure 22: ProcessCampLejeune – CLEAR Determination



Figure 23: ProcessCampLejeune: MSDSDetermination

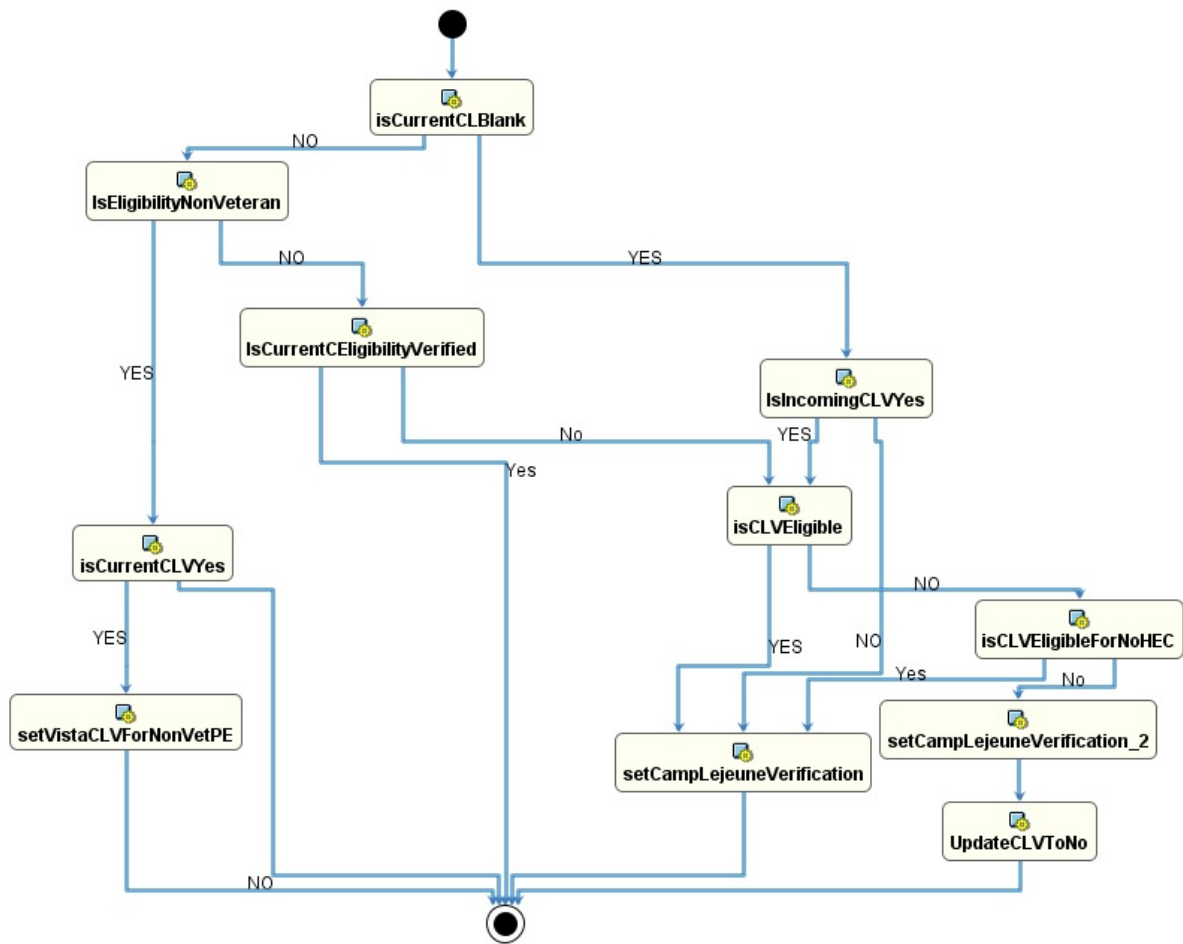


Figure 24: ProcessCampLejeune - VistaDetermination

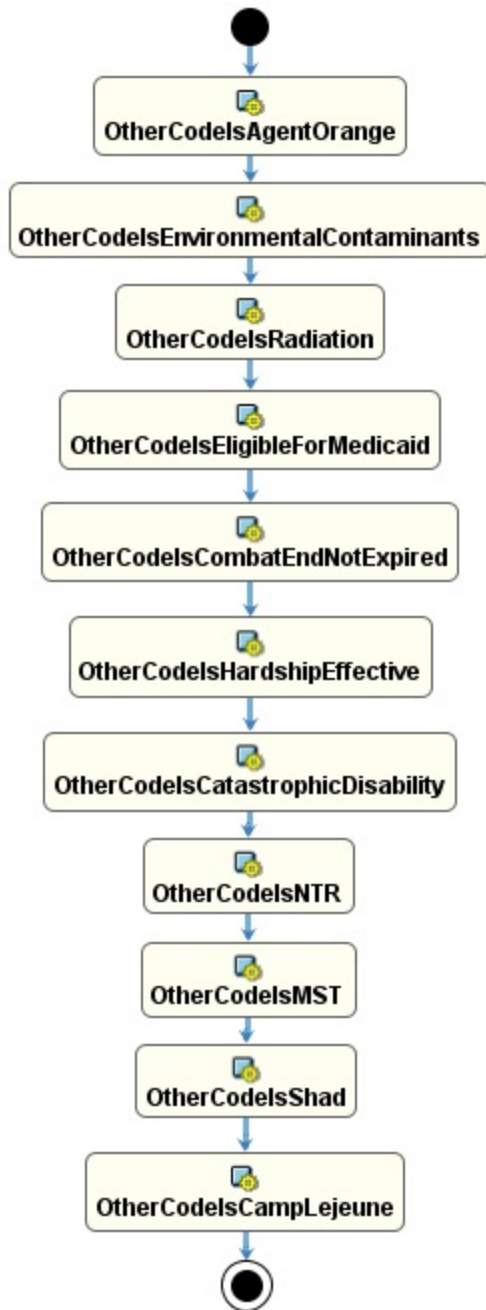


Figure 26: ReportOtherEligibilities

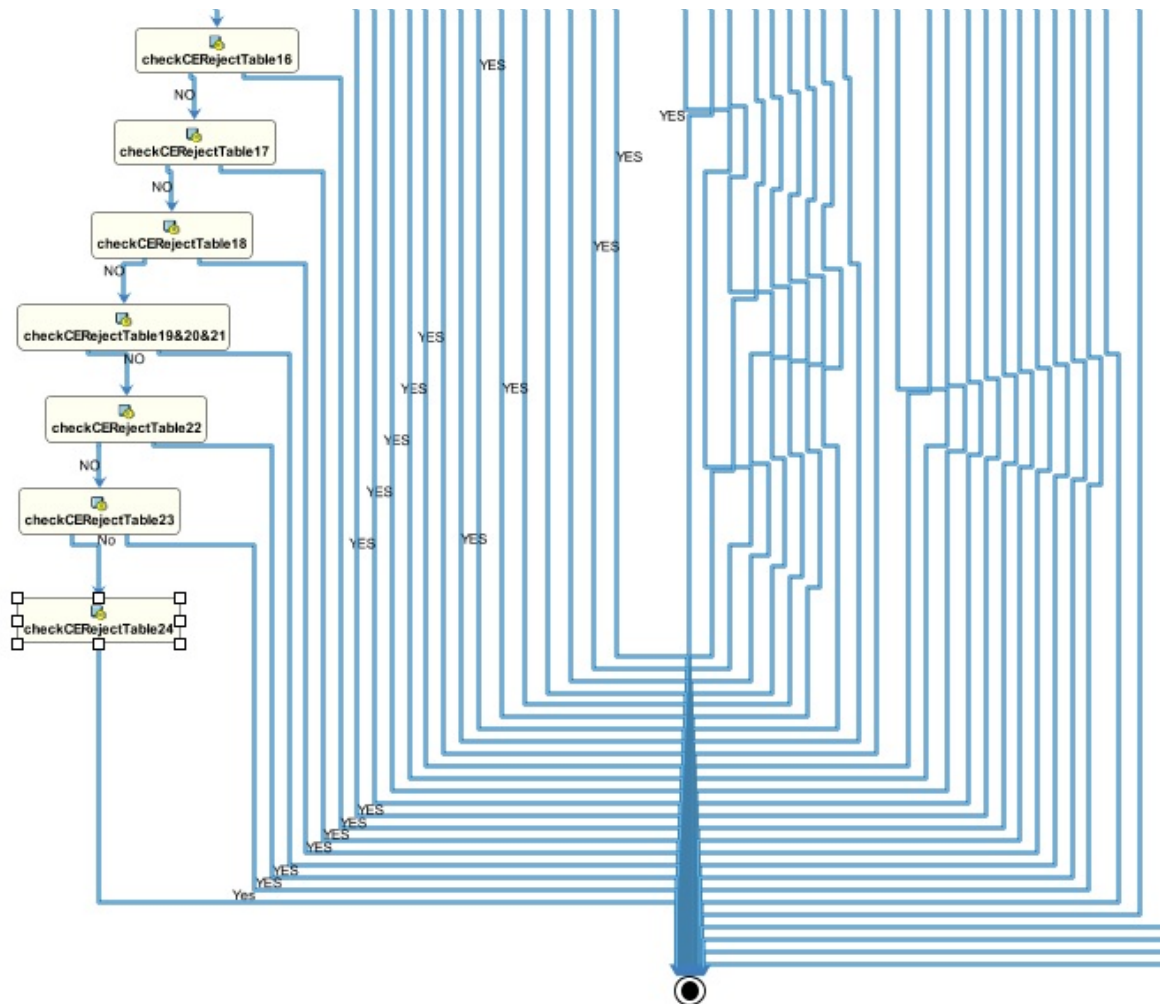


Figure 27: DetermineEnrollment: DeterminePriorityGroup: checkCERejectTable24

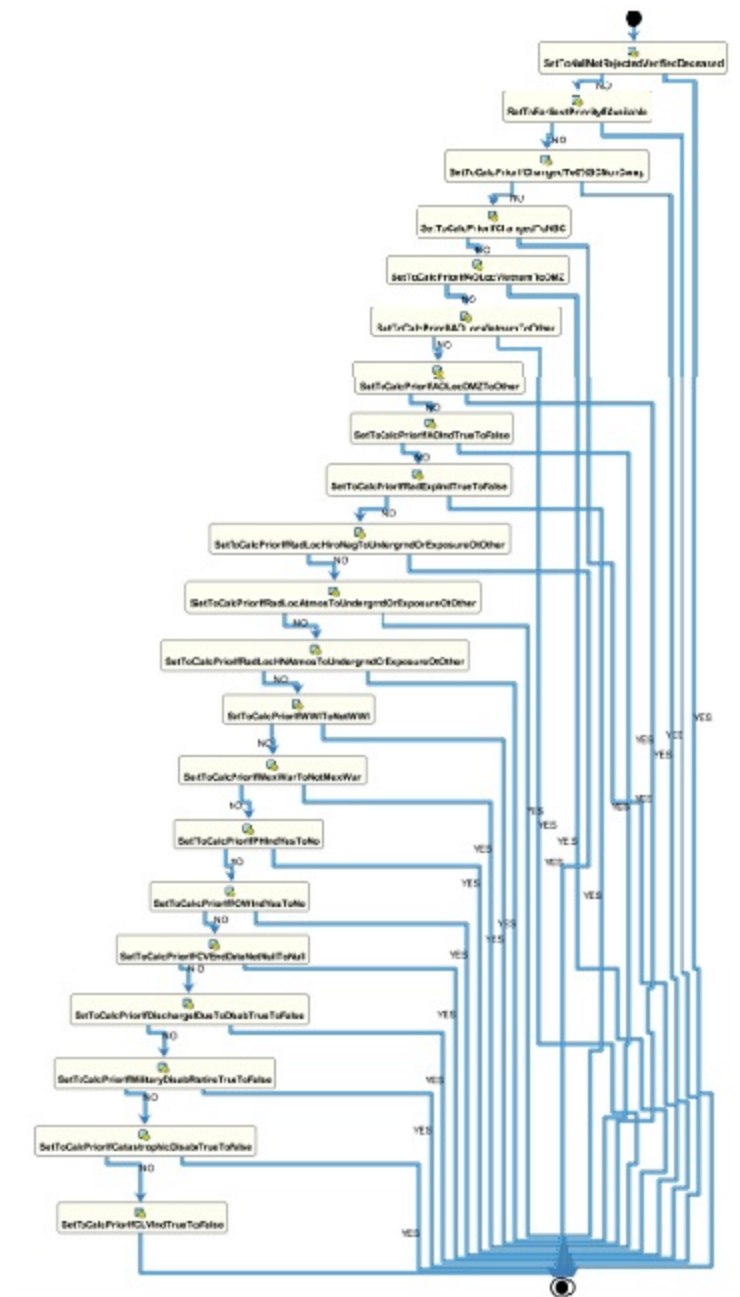


Figure 28: DetermineEnrollment: ApplyContinuousEnrollment:DetermineInitialEligibility

6.3. Network Detailed Design

Refer to the [Enrollment System Core SDD](#) for the target Network Design.

6.4. Service Oriented Architecture / ESS Detailed Design

There will be a slight enhancement to the SOA because the Camp Lejeune eligibility information will be transmitted to/from the ES web service as well as to/from external systems. The CL data will also be received from the VOA via the EE web service.

7. External System Interface Design

Refer to the [Enrollment System Core SDD](#) section 7 for External System Interface design details. For HL7 messaging, refer to the document [HECMS Interface Control Document](#).

7.1. Interface Architecture

There are no changes to the interface architecture for the CL-V enhancements.

7.2. Interface Detailed Design

Camp Lejeune Changes are included in the [4.2 Interface Control Document](#) under the ZEL segment.

8. Human-Machine Interface

There are no changes to the human-machine interface for the CL-V enhancements.

8.1. Interface Design Rules

There are no changes to the interface design rules for the CL-V enhancements.

8.2. Inputs

Additional input fields are in place for CL-V information. These fields are added to the User Interface, Database, HL7 messages and web services.

8.3. Outputs

Additional output fields are in place for CL-V information. These fields are added to the User Interface, Database, HL7 messages and web services.

8.4. Navigation Hierarchy

There are no changes to the navigation hierarchy for the CL-V enhancements.

9. Security and Privacy

No special considerations apply for security and privacy for the CL-V enhancements.

9.1. Security

N/A

9.2. Privacy

N/A

Attachment A – Approval Signatures

This section is used to document the approval of the System Design Document. The review should be conducted face to face where signatures can be obtained ‘live’ during the review. If unable to conduct a face-to-face meeting then it should be held via LiveMeeting and concurrence captured during the meeting. The Scribe should add /es/name by each position cited. Example provided below.

The Chair of the governing Integrated Project Team (IPT), Business Sponsor, IT Program Manager, and Project Manager are required to sign.

Signed:

Date:

< *Integrated Project Team (IPT) Chair* >

Signed:

Date:

< *Business Sponsor* >

Signed:

Date:

< *IT Program Manager* >

Signed:

Date:

< *Project Manager* >

A. Additional Information

N/A

A.1. RTM

The RTM for CL-V is located [here](#).

A.2. Packaging and Installation

N/A

A.3. Design Metrics

N/A

A.4. Acronym List and Glossary

N/A

Table 15: Glossary

Term	Meaning
N/A	

A.5. Required Technical Documents

N/A

A.6. Attach Documents

N/A